



- [Home](#)
- [About Us](#)
- [Products](#)
- [Specifications](#)
- [MSDS](#)
- [Applications](#)
- [Operating Instructions](#)
- [How To Apply VERSI-FOAM](#)
- [Troubleshooting](#)
- [Find Your Distributor](#)
- [Contact Us](#)
- [Sitemap](#)

[Search](#)

[Home](#) > [Applications](#) > Cold Storage Construction

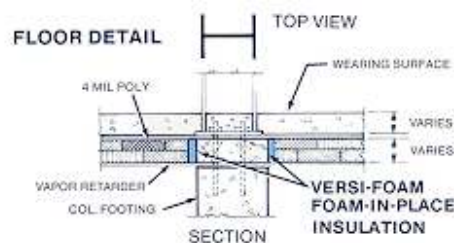
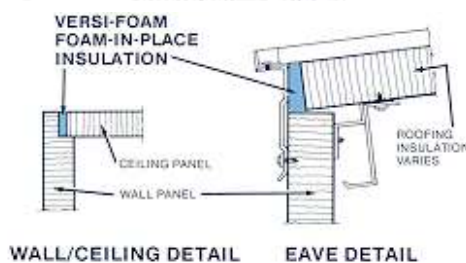
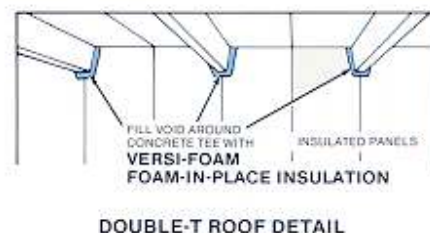
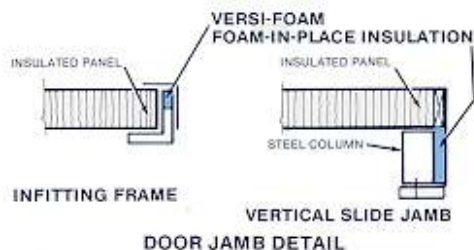
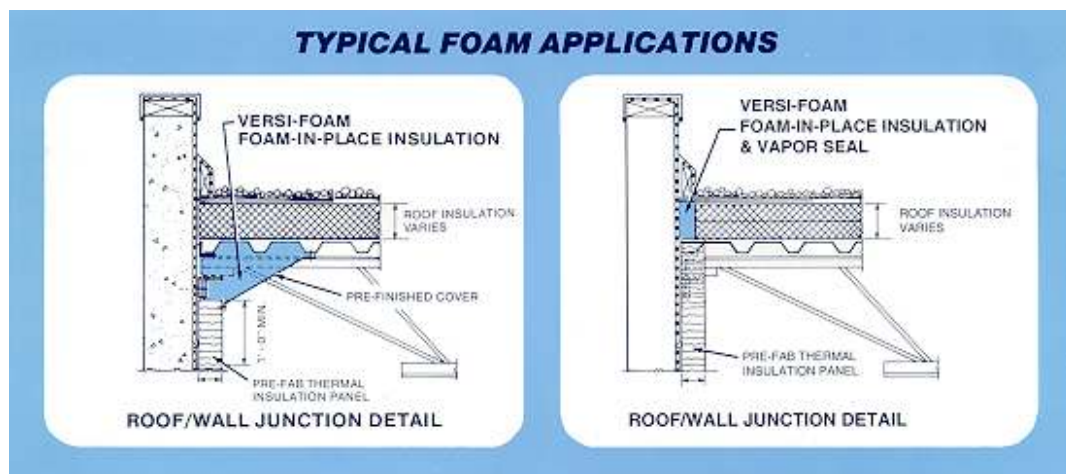
Cold Storage Construction

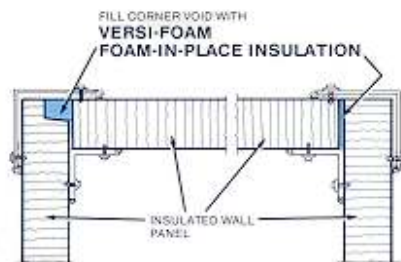
Most cold storage facilities are constructed using preinsulated panels (metal panels with foam sandwich cores). Because thermal leaks are the major concern in these structures, sprayed-in-place two component polyurethane foams have become an important part of the construction process.

VERSI-FOAM® is a convenient, portable means in which to apply the foam to the various junctions in the cold storage structure. It is used to seal the juncture where the roof meets the wall, wall and ceiling junctures on the interior, floor to wall junctions, and in corners.

The Operations Manual of the International Association of Cold Storage Warehouses cites VERSI-FOAM® for use in repair, replacement and maintenance of insulation.

Click on [specifications](#) and choose the [standard](#) foam formula for your cold storage construction needs.





CORNER PANEL DETAIL



[Home](#) | [About Us](#) | [Products](#) | [Specifications](#) | [MSDS](#) | [Applications](#)
[Operating Instructions](#) | [How to Apply VERSI-FOAM®](#) | [Troubleshooting](#)
[Find Your Distributor](#) | [Contact Us](#) | [Sitemap](#)

17100 West Victor Road · New Berlin, WI 53151-4139
(262) 754-8088 · 1-800-657-0702 · fax (262) 754-8089 · rhh@rhhfoamsystems.com

Copyright © 2008 RHH Foam Systems | All Rights Reserved [Privacy Statement](#)