

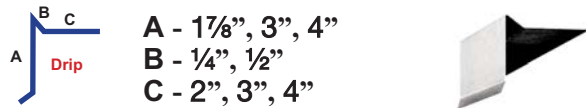
# Roofing Metals

## Contractor's Guide

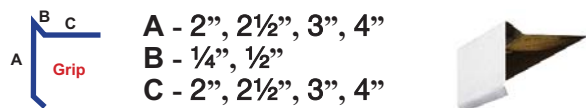


Distributed by: BEST MATERIALS LLC  
 Ph: 800-474-7570, 602-272-8128 Fax: 602-272-8014  
 www.BestMaterials.com Email: Sales@BestMaterials.com

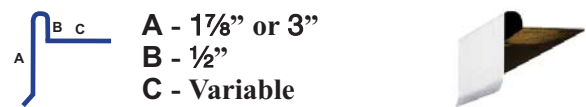
### Gravel Stop With Drip 4", 6", 7 1/4", 8"



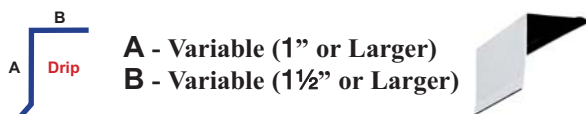
### Gravel Stop With Grip 4", 6", 7 1/4", 8"



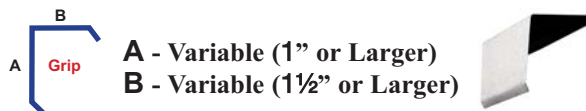
### Fabry Crown Gravel Stop



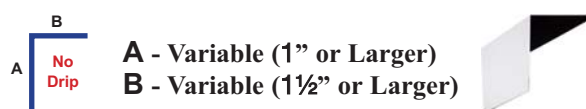
### Eave Strip With Drip



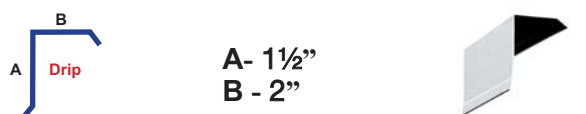
### Nosing With Grip or Double Grip



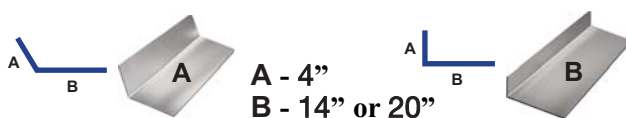
### 2 - Way Edge No Drip



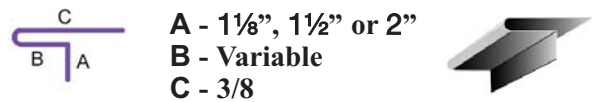
### Fascia Cap



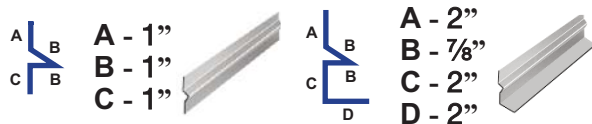
### Saddle Stock - Style A or B



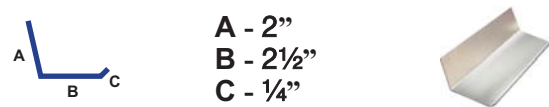
### Lap Joint - Drip or Grip



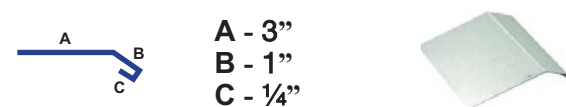
### Diatto - Regular or Leg Type



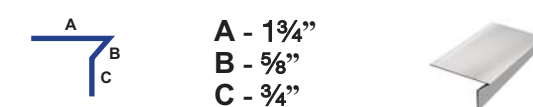
### Vertical Flashing



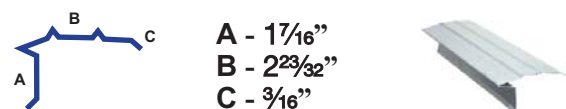
### Eave Starter #230



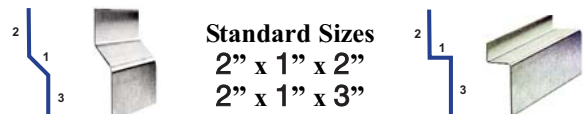
### T-Metal



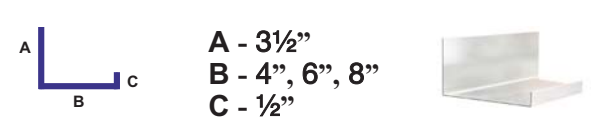
### D-Metal



### Z-Bar



### Tile Pan U-Channel 90 Degree



Distributed by: BEST MATERIALS LLC  
 Ph: 800-474-7570, 602-272-8128 Fax: 602-272-8014  
 www.BestMaterials.com Email: Sales@BestMaterials.com

### Ribbed Tile Pan



A - 4"  
B - 6" or 7"  
C - 3/4" or 1"



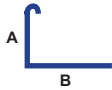
### Roof-To-Wall Head Flashing



A - 2", 3", 4"  
B - 4" or 6"  
Variable Pitch



### Tile Riser



A - 7/8" or 1 1/2"  
B - Variable  
4:12 Pitch



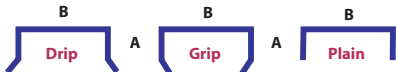
### Eave Riser Strip T-Style



A - 1 1/2" or 3"  
B - 2"  
C - 1 1/2"  
Weep & Nail Holes



### Coping - Grip, Drip or Plain



A - 2" B - 6", 8" or 10"



### Termite Flashing



A - 4" or 6"  
B - 6", 7", or 8"  
C - 1"



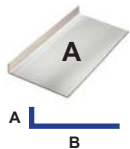
### Brick Flashing



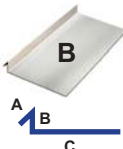
A - 1 1/2" @ 100°  
B - 2 3/4"  
C - 1/4"



### Counter Flashing A or B



A - 1/2" B - 1/2"  
B - 4 1/2", C - 5 1/2"  
C - 6"



### Tucker Flashing



A - 1/2"  
B - 1/2"  
C - 1/2"  
D - 3 1/2"



Metal Products For The Construction Industry

Distributed by: BEST MATERIALS LLC  
Ph: 800-474-7570, 602-272-8128 Fax: 602-272-8014  
www.BestMaterials.com Email: Sales@BestMaterials.com

### "W" Valley - With or Without Closed Hem

18" or 24" Width  
1" Rise



Aluminum Zinc Coated Steel or Galvanized

### 1 Rib Tile Valley - 3/4" Open Hem

26" Width  
1" Rise



Aluminum Zinc Coated Steel or Galvanized

### 2-Rib Open Valley - With or Without Closed Hem

26" Width  
1" Rise



4" Between Rise

Aluminum Zinc Coated Steel or Galvanized

### 3-Rib Valley - With or Without Closed Hem

24" Width  
Aluminum Zinc Coated Steel  
or Galvanized



### 4-Rib Valley - With or Without Closed Hem

24" Width  
Aluminum Zinc Coated Steel  
or Galvanized



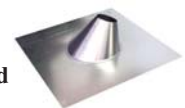
### 5-Rib Cedar Lite - With or Without Closed Hem

24" Width  
Aluminum Zinc Coated Steel  
or Galvanized



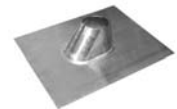
### Standard Pipe Flashing - Flat to 5:12

1/2" to 4"  
Galvanized or  
Zinc-Aluminum Coated Steel Standard  
or Aluminum Base



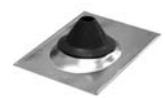
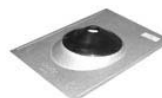
### FHA Base Pipe Flashing - Flat to 5:12

1/2" to 7"  
Galvanized or  
Zinc-Aluminum Coated Steel  
FHA Approved "Wide Base"



### Multiflex - Flat to 5:12

1/2" to 2"  
Galvanized or  
Zinc-Aluminum Coated Steel  
Low or High Neoprene Boot



### Roof Outlet

2" Round With 5" Long Tube  
2" Round With 10" Long Tube  
Galvanized

