

# Ventilation Contractor's Guide



*Metal Products For The Construction Industry*

Distributed by: BEST MATERIALS LLC  
Ph: 800-474-7570, 602-272-8128 Fax: 602-272-8014  
www.BestMaterials.com Email: Sales@BestMaterials.com

## STEALTH® Attic Vent - ICC ER-5463

24", 30", 36", 48"  
Aluminum-Zinc Coated Steel  
Composition, Flat & "S" Tile



## STEALTH® Ridge Vent - ICC ER-6171



Ridge Cap



Sub-flashing

## Nifty-fifty

Base: 15" x 18" Hood: 12" x 12"  
Hi-impact plastic in 7 colors  
50 sq. in. of Net Free Air



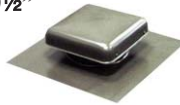
## T-Top

4" & 7" Round 6" x 6" Square  
Galvanized or Aluminum-Zinc  
Coated Steel Regular or Shake Base



## True-38

Base: 16½" x 16½" Hood: 10½" x 10½"  
Galvanized, Painted or  
Aluminum-Zinc Coated Steel  
38 sq. in. of Net Free Air



## T-Top Dead Soft Aluminum

4" & 7" Round  
Aluminum With  
Dead Soft Flashing



## Pentagon Dormer

13" x 19"  
"S" Tile or Flat Tile/Comp.  
68 sq. in. Net Free Air



## Aluminum Code Caps - Round

3" to 10" Round Regular Base  
ICBO RPT. 3728  
CLIS AA-513



## Half Round Dormer - Square Back

9" x 18" or 12" x 24"  
Aluminum-Zinc Coated Steel  
Regular or Aluminum Base



## Aluminum Code Caps - Oval

4" Horizontal or Vertical  
ICBO RPT. 3728  
CLIS AA-513



## Half Round Dormer - Pointed Back

9" x 18" or 12" x 24"  
Aluminum-Zinc Coated Steel  
Regular or Aluminum Base



## Roof Jack

4", 6", 8"  
Regular Base  
Galvanized



## Eyebrow Dormer

4" x 19"  
Regular Base  
Aluminum-Zinc Coated Steel



## 2 Piece Roof Jack

3"- 4" 5"- 6" 7"- 8"  
Regular or Shake Base



## Horizontal Comb Vent

4" x 14"  
Regular Base  
Galvanized



## Vertical Comb Vent

4" x 14"  
Regular Base  
Galvanized



Distributed by: BEST MATERIALS LLC  
Ph: 800-474-7570, 602-272-8128 Fax: 602-272-8014  
www.BestMaterials.com Email: Sales@BestMaterials.com

### Snow Splitter

1" - 2"  
3" - 4"  
Galvanized



### China Cap

4" to 24"  
Galvanized



### Rectangular Gable End Louver

9" x 14", 12" x 14", 18" x 14", 24" x 14"  
Galvanized Flush or Plaster Ground  
2" Flange Weep & Nail Holes



### Round Gable End Louver

14" or Larger Galvanized  
Flush or Plaster Ground



### Stamped Louver or Mesh Vent



6" x 14" Bonderized

### Foundation Vent with 1/4" Screen

6" x 14" Galvanized  
Plaster Ground



### Ready Vent® - 8" x 16"

Poured in Place Foundation Vent  
With or Without 2 Doors  
Gray or Black



### Dryer Vent & Wall Cap

4" Dryer Vent  
6" Long Tube  
with 2" Flange



4" or 7"  
Wall Cap  
with screen



### Rotary Ventilators

24", 36", 48"  
Galvanized or  
Aluminum-Zinc Coated Steel



### Gravity Vent

12" x 12"  
1/4" Screen  
Aluminum-Zinc Coated Steel



### Tub Access Door

14" x 14" Piano or Hinge Snap On  
1/2" or 7/8"  
Plaster Ground



### Half Round Sub Base Flashing

9" x 18" Dormer 10" x 10" Opening  
12" x 24" Dormer 14" x 14" Opening



## NET FREE AIR FLOW

### STEALTH® Ridge Vent

Per lineal foot ..... 8 sq. in.

### STEALTH® Attic Vents

24" wide ..... 40 sq. in.

30" wide ..... 53 sq. in.

36" wide ..... 66 sq. in.

48" wide ..... 90 sq. in.

### True-38

10½"x 10½" ..... 38 sq. in.

### NIFTY-fifty

12" x 12" ..... 50 sq. in.

### Eyebrow Vent

4" x 19" ..... 50 sq. in.

### Pentagon Dormer

13" x 19" ..... 68 sq. in.

### Half Round Dormers

9" x 18" ..... 28.47 sq. in.

12" x 24" ..... 50.19 sq. in.

### Ready-Vent®

8" x 16" ..... 73 sq. in.



Metal Products For The Construction Industry

Distributed by: BEST MATERIALS LLC  
Ph: 800-474-7570, 602-272-8128 Fax: 602-272-8014  
www.BestMaterials.com Email: Sales@BestMaterials.com