



# Metal Roofing Tools

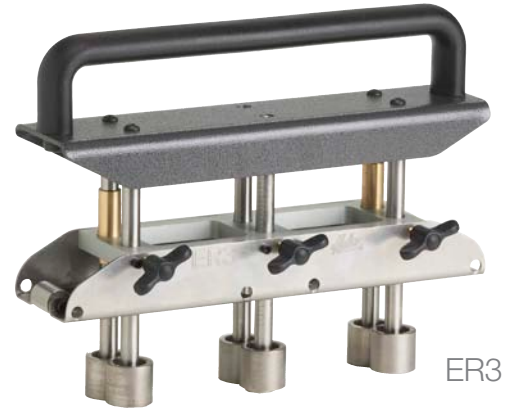
Distributed by: BEST MATERIALS LLC  
Ph: 800-474-7570, 602-272-8128  
Email: sales@bestmaterials.com  
www.bestmaterials.com

# 3-Station Edge Roller

assures a uniform bend along entire length of material



Outer rollers may travel off material and easily back on to complete bend because two roller stations can remain aligned on the edge of material.



ER3



Quickly adjusts for making 5/8" to 4" (15.9-102 mm) bends in 29-22 gauge (0.36-0.76 mm) steel.

The center roller station of the ER3 Edge Roller features a precision English / Metric depth gauge on one shaft leg that, when locked in place at desired setting, accurately aligns the depth of all roller stations. Large, comfortable adjustment knobs hold depth setting securely.

Also adjusts for making curved bends!

The center roller station of the ER3 is also independently adjustable, with outer roller stations retracted and locked, to allow for bending on a curve.



## Specifications

Catalog Number	Description	Bending Depth in. (mm)	Net Wt. lbs. (kg)
ER3	3-Station Edge Roller	5/8 - 4 (15.9-102)	8.5 (3.86)
<b>CAPACITIES</b>	Material	Mild Steel 24 Gauge	
	inches (mm)	.024 (0.61)	

# High Leverage

## Drip Edge Folding Tool

For quick bends in standing seam panel edges



Makes up to 1-1/2" (38.1 mm) deep bends along drip edge of roofing panel.



Durable lightweight steel and aluminum construction with weather resistant finishes!



Works on installed panels or on a workbench for pre-bending panels.

### Specifications

Catalog Number	Description	Bending Depth in. (mm)	Bending Length in. (mm)	Net Wt. lbs. (kg)
DEFT	Drip Edge Folding Tool	1-1/2 (38.1)	24 (61)	3.65 (1.66)