

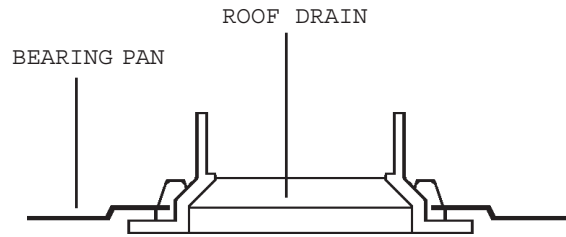


## Installation Instructions- Bearing Pan



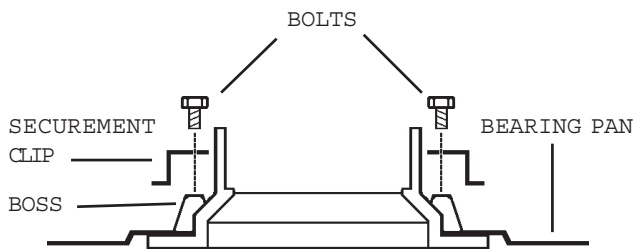
### STEP 1

Ensure drains on jobsite are the appropriate size.



### STEP 2

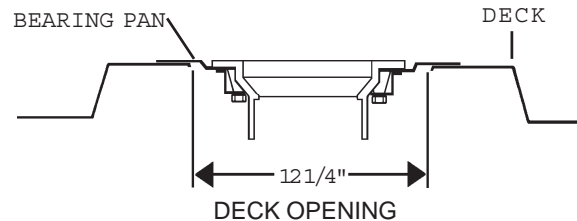
Invert roof drain on a solid surface, invert bearing pan and lay over roof drain flange.



### STEP 3

#### INSTALL BEARING PAN

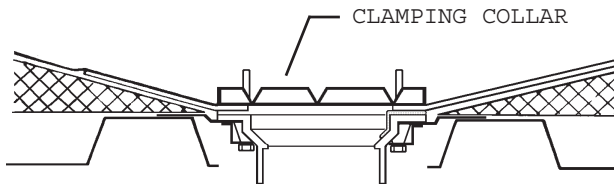
Position four drain securement clips over raised bosses and onto bearing pan. Install four hex head bolts and tighten.



### STEP 4

#### INSTALL IN DECK

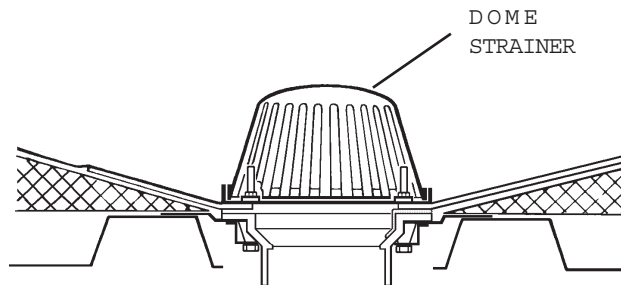
Return the completed assembly to upright and normal position. Position assembly into pre-cut deck opening so that flange of bearing pan is flush on deck surface. Tack weld or use button head screws (not supplied) to secure completed assembly to deck.



### STEP 5

#### INSTALL CLAMPING COLLAR

Depending on the roof system and application, the Clamping Collar/ Gravel Guard clamps and secures the roof membrane in place. Utilize a water block per Roof Manufacturer recommendations.



### STEP 6

#### INSTALL DOME STRAINER

Attach Dome strainer to Gravel Guard using the three bolts.

Distributed by: **BEST MATERIALS® LLC**

Ph: 800-474-7570, 602-272-8128 Fax: 602-272-8014

[www.BestMaterials.com](http://www.BestMaterials.com) Email: [Sales@BestMaterials.com](mailto:Sales@BestMaterials.com)