



## Alumi-Flash Standard with C-212 Cap

Distributed by Best Materials LLC

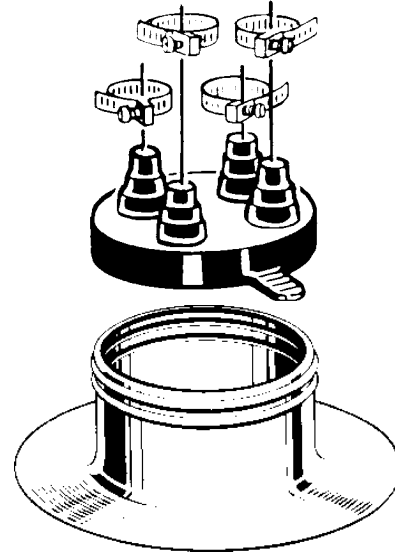
For more information call:

**800.474.7570, 602.272.8128**

Website: <http://www.bestmaterials.com> E-mail: [sales@bestmaterials.com](mailto:sales@bestmaterials.com)

### SPECIFICATION

Furnish and install the Portals Plus Standard Alumi-Flash as manufactured by Portals Plus, Inc., Bensenville, IL, at all points where up to two pipes .375" - 1" and up to two pipes 1" - 2" in diameter are penetrating the roof. The Standard Alumi-Flash shall include a .060" spun aluminum base unit with a height of 4" and a base diameter of 14". The 8" collared opening shall have two beaded sealing rings roll formed into the top edge. An EPDM (Ethylene Propylene Diene Monomer) compression molded cap model C-212 shall be utilized. All Caps shall include Portals Plus' stainless steel Snaplock Clamps. Attachment and installation of the Standard Alumi-Flash shall be done in accordance with Portals Plus' instructions and the roofing membrane manufacturer's recommendations.



NOTE: All dimensions are I.D. of conical shaped nipples

