

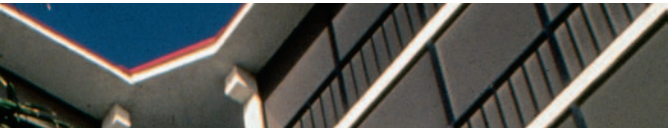
Sonneborn®

Distributed by: BEST MATERIALS® LLC
Ph: 800-474-7570, 602-272-8128
www.BestMaterials.com
Email: Sales@BestMaterials.com

TUF-TRAC®

Skid-resistant acrylic coating

Color Guide



 **BASF**

The Chemical Company

TUF-TRAC®

Beautifies and protects concrete and asphalt

Tuf-Trac® is a 100% acrylic coating formulated from a unique blend of modified acrylic polymers and colorfast pigments to protect and preserve asphalt and concrete surfaces. It creates an attractive skid-resistant surface that withstands the rigors of virtually any climate. It is ideal for:

- balconies
- walkways
- pool decks
- recreational areas
- tennis courts
- patios
- arenas
- bike paths

Features and Benefits

- Durability – long lasting protection
- Textured surface – slip-resistant safety finish
- Vibrant permanent colors – beautifies surface
- Water-based – VOC compliant
- Available in custom colors – enables color matching
- Ready to use – easy to apply

For application instructions and more detailed product information, refer to the Product Data Sheet.

Standard Colors



Tennis Green 451



Court Red 453



French Grey 458



Driftwood 460



Clay Tan 456

Colors above serve only as a visual guide for initial selection of color. It is important to note that the colors seen will vary depending on your monitor settings, as well as by the specific settings for your color printer, should you print the results of your search. See your BASF distributor for actual color samples.

LIMITED WARRANTY NOTICE Every reasonable effort is made to apply BASF exacting standards both in the manufacture of our products and in the information which we issue concerning these products and their use. We warrant our products to be of good quality and will replace or, at our election, refund the purchase price of any products proved defective. Satisfactory results depend not only upon quality products, but also upon many factors beyond our control. Therefore, except for such replacement or refund, BASF MAKES NO WARRANTY OR GUARANTEE, EXPRESS OR IMPLIED, INCLUDING WARRANTIES OF FITNESS FOR A PARTICULAR PURPOSE OR MERCHANTABILITY, RESPECTING ITS PRODUCTS, and BASF shall have no other liability with respect thereto. Any claim regarding product defect must be received in writing within one (1) year from the date of shipment. No claim will be considered without such written notice or after the specified time interval. User shall determine the suitability of the products for the intended use and assume all risks and liability in connection therewith. Any authorized change in the printed recommendations concerning the use of our products must bear the signature of the BASF Technical Manager.

This information and all further technical advice are based on BASF's present knowledge and experience. However, BASF assumes no liability for providing such information and advice including the extent to which such information and advice may relate to existing third party intellectual property rights, especially patent rights. In particular, BASF disclaims all CONDITIONS AND WARRANTIES, WHETHER EXPRESS OR IMPLIED, INCLUDING THE IMPLIED WARRANTIES OF FITNESS FOR A PARTICULAR PURPOSE OR MERCHANTABILITY. BASF SHALL NOT BE RESPONSIBLE FOR CONSEQUENTIAL, INDIRECT OR INCIDENTAL DAMAGES (INCLUDING LOSS OF PROFITS) OF ANY KIND. BASF reserves the right to make any changes according to technological progress or further developments. It is the customer's responsibility and obligation to carefully inspect and test any incoming goods. Performance of the product(s) described herein should be verified by testing and carried out only by qualified experts. It is the sole responsibility of the customer to carry out and arrange for any such testing. Reference to trade names used by other companies is neither a recommendation, nor an endorsement of any product and does not imply that similar products could not be used.

Distributed by

BEST MATERIALS® LLC
Ph: 800-474-7570, 602-272-8128
www.BestMaterials.com
Email: Sales@BestMaterials.com

BASF Construction Chemicals, LLC – Building Systems

889 Valley Park Drive
Shakopee, MN 55379
www.BuildingSystems.BASF.com

Customer Service 800-433-9517
Technical Service 800-243-6739

Form No. 1017880
© 2008 BASF
7/08 Printed in U.S.A.