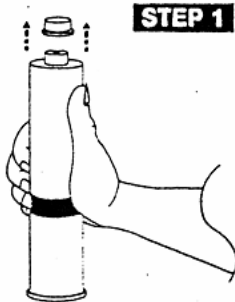


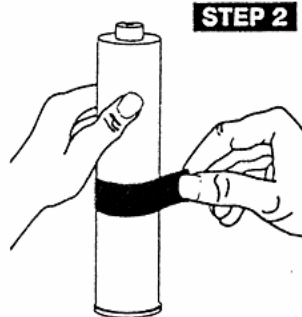
TECH KIT MIXING INSTRUCTIONS

CPR TECH KIT MIXING INSTRUCTIONS

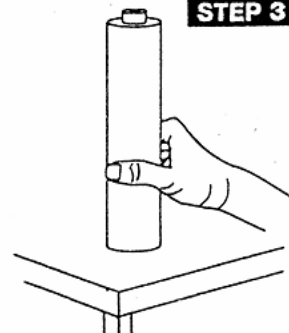
CAUTION: Wear Safety Glasses, Gloves and other appropriate protection during all operations. For optimum performance, maintain material and kit between 60°F-80°F.



STEP 1
Remove Red Snap Lock Plug from top of cartridge.



STEP 2
Remove tape band from the cartridge kit and discard.



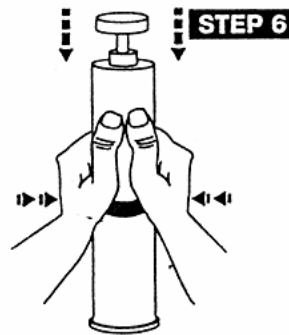
STEP 3
Place cartridge on firm surface.



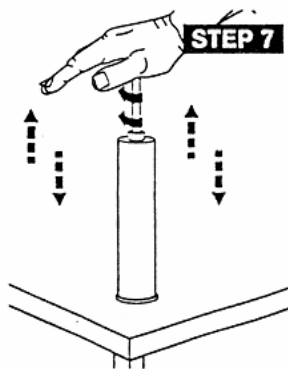
STEP 4
Insert plunger rod through opening and fasten rod to wheel by turning clockwise approximately three (3) turns.



STEP 5
Pull rod straight up towards open end of cartridge. This will separate the foil from the mixing wheel.



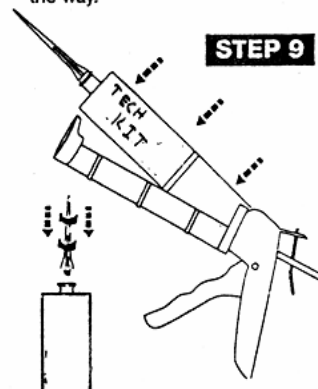
STEP 6
Depress the cartridge in the area of the removed tape band to deform the foil barrier. Push rod to end of cartridge to get foil barrier out of the way.



STEP 7
Rotate the rod in a clockwise direction while moving it up and down in the cartridge. Be sure to move the rod all the way to the top and bottom of the cartridge while mixing. Mix materials for approximately 20 strokes or 1 minute. The rod should be fully extended on the last stroke.



STEP 8
Remove bottom cap from the cartridge and unscrew the rod from the wheel in a counter-clock wise direction. Remove the rod from the cartridge and discard.



STEP 9
Screw the threaded nozzle into the cartridge and place cartridge in caulking gun. Dispense liquid epoxy within 30 minutes after mixing. This product will harden if not dispensed within 30 minutes.

CPR PRODUCTS, INC.

1315 West Lark Ind. Park Dr. St. Louis, MO 63026 Phone 636-717-0666 Toll Free 888-531-8940

