

Distributed by: BEST MATERIALS®
 Ph: 800-474-7570, 602-272-8128 Fax: 602-272-8014
 www.BestMaterials.com Email: Sales@BestMaterials.com

#3 Phillips drive, 10 tpi, drill point
 For insulation and membrane attachment to wood,
 steel, and structural concrete roof decks



- Can be pre-assembled to plastic Dekflat plate for insulation attachment and to seam plates for roof cover attachment.
- 10 threads per inch for ease of installation in concrete roof decks.
- Low profile truss head can be used for clip attachment in applications where head height is important.

- Deep #3 recess provides for ultimate bit engagement.
- The Dekfast reduced drill point provides for ultimate pull-out values by producing a minimum opening. Thread engagement is superior as compared to standard drill points.
- e-coat

Application

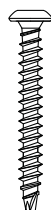
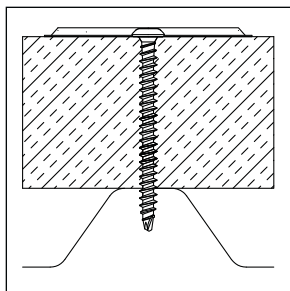
#14 Dekfast Fasteners Insulation board to roof deck

Materials:

- Steel thickness from 22 ga (.028 in.) through 18 ga (.045 in.):
 Min penetration: 3/4"
- Plywood: Min thickness: 3/4"
 FR treated; min through penetration: 1/4"
- Wood 2x (1-1/2" thick):
 Min penetration: 1"
- Structural concrete:
 Min penetration: 1"

Use with:

- Dekfast 2-7/8" hex plates
- Dekfast 3" round plastic Dekflat plates
- Other attachment elements approved by the roofing system manufacturer for use with its products



Head: #3 Phillips
 Head Height: .118" max
 Head Dia: .448" max
 Thread Major Dia: .238"
 Shank Dia: .180"

Strength (lbs ult.):

Tensile: 3600
 Torsional: 110 in-lbs min
 Shear: 2630

Pull-out (lbs avg.):

22 ga: 540
 20 ga: 630
 18 ga: 900
 4000 psi concrete (1" penetration): 850
 3/4" plywood (through penetration): 590
 2x dimensional lumber (1" penetration): 605

Notes

Dimensions are nominal inches unless noted. Steel roof decks include all FM-approved 18-20-22 ga. FM-approved wood decks include 3/4" FR plywood and 2x dimensional lumber. Structural concrete to be predrilled with standard 3/16" carbide bit to minimum 1/2" deeper than fastener penetration. The specific job conditions should be considered and appropriate safety factors applied when specifying the proper fasteners.

Selection

Fastener Length	*Thread Length	Material No. Phillips Head #14-10	North American Code	Steel	Wood	Concrete	Carton Wt. (lbs)	Carton Qty.	Skid Qty.
1-1/4"	Full	1202602	DF-#14x1-1/4-PH3-E0999-B	Up to 1/2"	Up to 1/4"	Up to 1/4"	12	1,000	60,000
2"	Full	1203249	DF-#14x2-PH3-E0999-B	Up to 1-1/4"	Up to 1-1/4"	Up to 1"	19	1,000	60,000
3"	Full	1203528	DF-#14x3-PH3-E0999-B	Up to 2-1/4"	Up to 2"	Up to 2"	24	1,000	60,000
4"	Full	1203578	DF-#14x4-PH3-E0999-B	1-1/4" to 3-1/4"	1-1/4" to 3"	2" to 3"	30	1,000	60,000
5"	4"	1203605	DF-#14x5-PH3-E0999-B	1-1/4" to 4-1/4"	1-1/4" to 4"	3" to 4"	45	1,000	40,000
6"	4"	1203632	DF-#14x6-PH3-E0999-B	2-1/4" to 5-1/4"	2-1/4" to 5"	4" to 5"	46	1,000	40,000
7"	4"	1203659	DF-#14x7-PH3-E0999-B	3-1/4" to 6-1/4"	3-1/4" to 6"	5" to 6"	28	500	30,000
8"	4"	1203810	DF-#14x8-PH3-E0999-B	4-1/4" to 7-1/4"	4-1/4" to 7"	6" to 7"	31	500	30,000
9"	4"	1204081	DF-#14x9-PH3-E0999-B	5-1/4" to 8-1/4"	5-1/4" to 8"	7" to 8"	34	500	20,000
10"	4"	1202260	DF-#14x10-PH3-E0999-B	6-1/4" to 9-1/4"	6-1/4" to 9"	8" to 9"	38	500	20,000
11"	4"	1202597	DF-#14x11-PH3-E0999-B	7-1/4" to 10-1/4"	7-1/4" to 10"	9" to 10"	41	500	20,000
12"	4"	1202600	DF-#14x12-PH3-E0999-B	8-1/4" to 11-1/4"	8-1/4" to 11"	10" to 11"	45	500	20,000

* Note - Thread length measured from tip of the drill point to end of threads.

Approvals

Dekfast fasteners are Factory Mutual approved for attachment of insulation board and/or roof cover to roof deck. Refer to FM Approval Guide and Supplements for current FM approved insulation fastening patterns. #14 fasteners meet Factory Mutual corrosion-resistance Standard 4470.

Installation

Tools: 2000–2500 rpm screw guns and #3 hardened Phillips bit. For structural concrete, 3/16" carbide bit and 1500 rpm max screw guns, or hammerdrills in the hammer mode.

The standard carton package includes one #3 Phillips bit.

Options

