

Dekspike™

1/4" mushroom head  
For insulation and membrane attachment to structural concrete roof decks



- Compresses at 3 contact points to match the tolerance of the drilled hole.
- Can withstand dynamic loads induced by wind loading.
- Standard black e-coat coating.

Applications

**Dekspike  
Structural Concrete  
Roofing Anchor**

Materials:

- Structural concrete:  
Min penetration: 1-1/4"  
(Min penetration for 1-1/4" length: 7/8")

Composition thickness range of Dekspike 1-1/2" through 16":

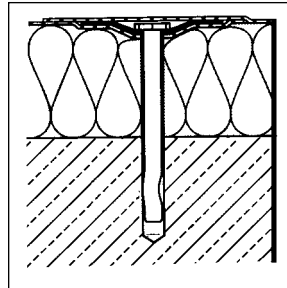
Anchor length less 1-1/4"  
(Min embedment: 1-1/4")

Composition thickness range of Dekspike 1-1/4": 3/8"  
(Min embedment: 7/8")

Min FM approved insulation board for concrete application: 1/2"  
Min FM approved penetration: 1-1/4"  
Shortest FM approved length for insulation attachment: 2"

Use with:

- Batten Bar
- Steel insulation plates
- Steel membrane plates



Head: Mushroom Head  
Head Height: .120" max  
Head Dia: .500" max  
Shank Dia: .239"

**Strength (lbs ult.):**

Tensile (at 1-1/4" embedment): 1100

**Pull-out (lbs avg.):**

4000 psi (1-1/4" penetration): 1550

Notes

Dimensions are nominal inches unless noted. Tension strength (pull-out) based on 1-1/4" embedment depth and 2500 psi concrete. Pull-out strength is 1100 lbs ult. in 2500 psi concrete (FM J.I. No. 0Y0A8.AM) at 1-1/4" penetration depth.

Selection

Length	Part No.	Carton Wt. (lbs)	Carton Qty.	Skid Qty.
1-1/4"	N5110-999	11	500	60,000
1-1/2"	N5120-999	11	500	60,000
2"	N5130-999	16	500	60,000
2-1/2"	N5140-999	21	500	42,000
3"	N5150-999	22	500	18,000
3-1/2"	N5160-999	25	500	18,000
4"	N5170-999	31	500	18,000
4-1/2"	N5180-999	31	500	18,000
5"	N5190-999	35	500	18,000
5-1/2"	N5200-999	36	500	18,000
6"	N5210-999	20	250	21,000
6-1/2"	N5220-999	21	250	21,000
7"	N5230-999	23	250	21,000
7-1/2"	N5240-999	26	250	21,000
8"	N5250-999	28	250	21,000
9"	N5270-999	30	250	9,000
10"	N5290-999	33	250	4,500
11"	N5310-999	14	100	8,000
12"	N5330-999	15	100	8,000
13"	N5350-999	16	100	5,000
14"	N5370-999	17	100	5,000

Distributed by: BEST MATERIALS LLC, Phoenix AZ  
Ph: 800-474-7570, 602-272-8128 Fx: 602-272-8014  
www.BestMaterials.com Email: Sales@BestMaterials.com

Continued on following page

**Dekspike™****1/4" mushroom head***For insulation and membrane attachment to structural concrete roof decks*

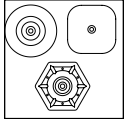
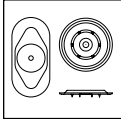
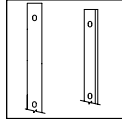
## Approvals

Dekspike fasteners and plates are Factory Mutual approved for the attachment of insulation board and/or roof cover to roof deck.

## Installation

Tools: ANSI 1/4" diameter (.268 – .260 dia) drill bit. Drill hole depth at least 1/2" beyond the anticipated embedment depth. Clean the hole and drive Dekspike flush against the plate or material being fastened.

## Options

**Insulation  
Plates****Membrane  
Plates****Termination  
Product****Coatings**

Distributed by: **BEST MATERIALS LLC, Phoenix AZ**  
Ph: 800-474-7570, 602-272-8128 Fx: 602-272-8014  
[www.BestMaterials.com](http://www.BestMaterials.com) Email: [Sales@BestMaterials.com](mailto:Sales@BestMaterials.com)