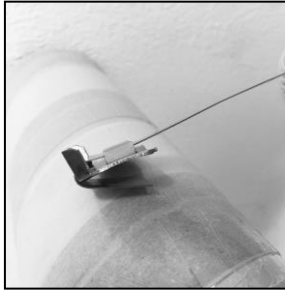


**Easy Tool Manual**

**Pistol Grip Position**

1



Insert the band into the buckle. The buckle teeth shall be in the direction of the operator with the ears faced up. Bend end of band under buckle.

2



Place the band in the tool with sufficient band in the winding mandrel.

3



Press the tensioning handle several times until the buckle is tight.

4



Roll tool over as far as tool will go and push forward cutter handle to cut the band.

5



Hammer down buckle ears to complete the application.

**Straight or Angle Position**

1



Place the band in the tool with sufficient band in the winding mandrel.

2



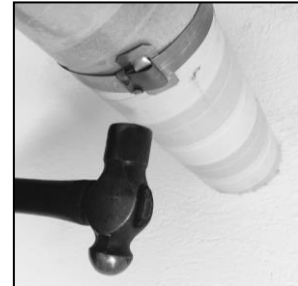
Press the tensioning handle several times until the clamp is tight.

3



Roll tool over as far as tool will go and push forward cutter handle to cut the band.

4



Hammer down buckle ears to complete the application.