

BEST MATERIALS®

Ph: 800-474-7570, 602-272-8128 Fax: 602-272-8014

www.BestMaterials.com Email: Sales@BestMaterials.com

PRODUCT DATASHEET / SPECIFICATION

PRODUCT DESCRIPTION: Flat Roof Vent, 18x18 inch ID, 247 sq.in. net free area. These stationary roof ventilators are designed for general relief and both intake/exhaust applications. The large good provides good weather protection with low air restriction.

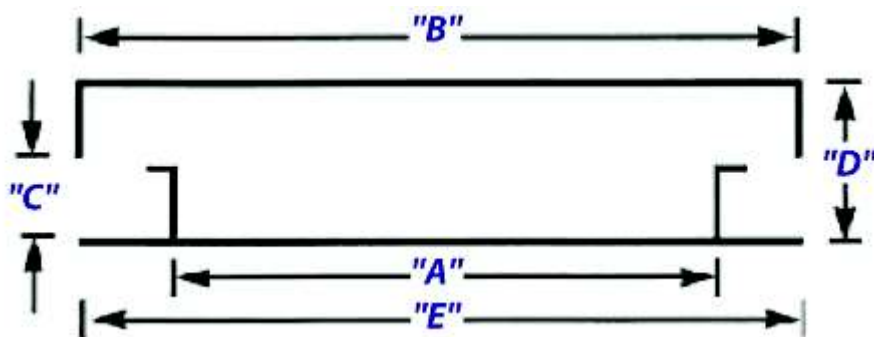
CONSTRUCTION: Standard in G90 galvanized 26 gauge steel. Seams are spot welded and caulked to assure against leakage. #4 steel mesh screen in opening meets FHA requirements for protection against bird and insect passage.

OPTIONS:

Standoff: Available with stand-off clearances of 3.5 (standard), 6 or 7 (for foam roofs) and 12 inches (for snow areas). Stand-off clearance is the deck to underside of Vent Box.

**Removable Top.
24 Gauge Steel.**

DIMENSIONS:



| ITEM # | A | B | C | D | E | TOP |
|-----------------------|--------|---------|-----|-------|---------|-----------|
| ROOFVENT-18X18FLAT | 18" SQ | 27 x 27 | 3.5 | 8 | 30 x 30 | Fixed |
| ROOFVENT-18X18W8T | 18" SQ | 27 x 27 | 7 | 12-13 | 30 x 30 | Fixed |
| ROOFVENT-18X18W8RT | 18" SQ | 29 x 29 | 6 | 11-12 | 30 x 30 | Removable |
| ROOFVENT-18X18X12RT | 18" SQ | 29 x 29 | 12 | 17 | 30 x 30 | Removable |
| ROOFVENT18X18X12RT24* | 18" SQ | 29 x 29 | 12 | 17 | 30 x 30 | Removable |

(*24 gauge)

INSTALLATION: Install as per specification detail for the type of roof system being used.

Rev: 1/29/13