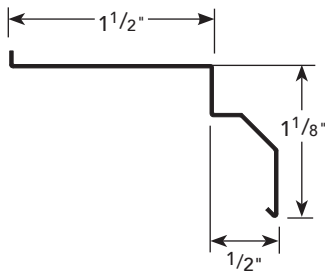


Buy Here Now:

<http://www.bestmaterials.com/detail.aspx?ID=21241>

PRODUCT DETAIL



USAGE

Specially manufactured for masonry applications, this reglet is laid into masonry joints and held in place as the mortar cures. As a result, there is no opening for water penetration.

Type MA reglet has a 1 1/2" top flange for brick; Type MA-4 has a 4" top flange for concrete block.

MATERIALS & FINISHES

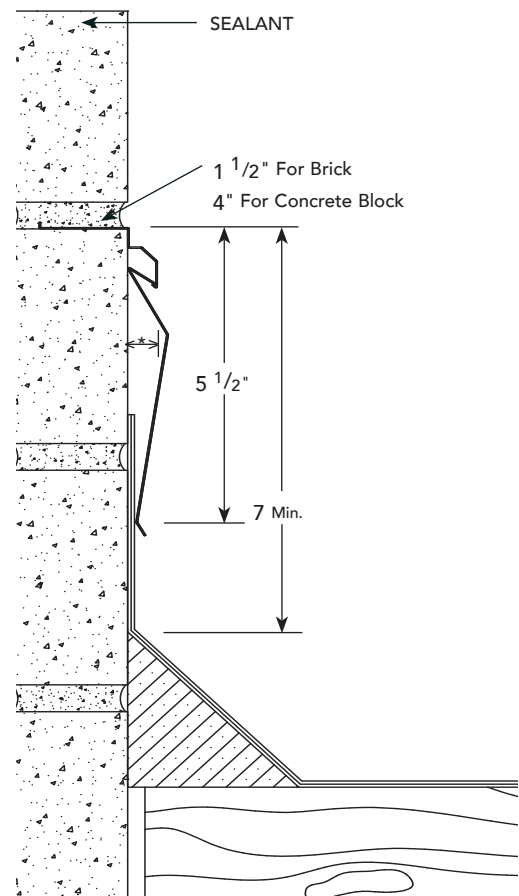
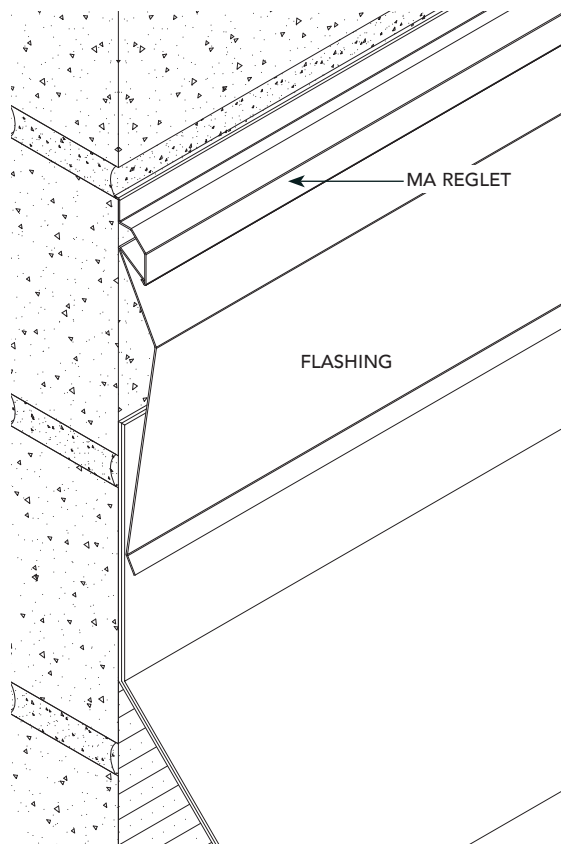
MATERIAL & THICKNESS

- Galvanized steel – 24 ga.
- Copper – 16 oz.
- Aluminum – 0.025" & 0.040"
- Stainless steel, Type 304 – 0.020"

FINISH & COLOR

- Galvanized steel – Standard zinc finish
- Galvanized steel – Factory applied Kynar 500/Hylar 500 finish
- Copper – Standard uncoated finish
- Aluminum – Gray polyester coating
- Stainless steel, Type 304 – Standard uncoated finish

INSTALLATION DETAIL



*Actual dimension between wall and the inside flange of reglet is 7/8". See separate sheet for product installation instructions. Drawings are not to scale.