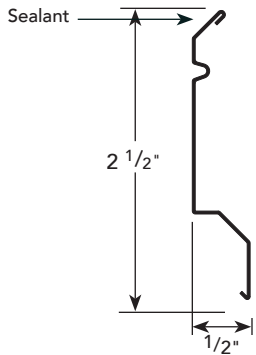


Buy Here Now:

<http://www.bestmaterials.com/detail.aspx?ID=17216>

<http://www.bestmaterials.com/detail.aspx?ID=11652>

PRODUCT DETAIL



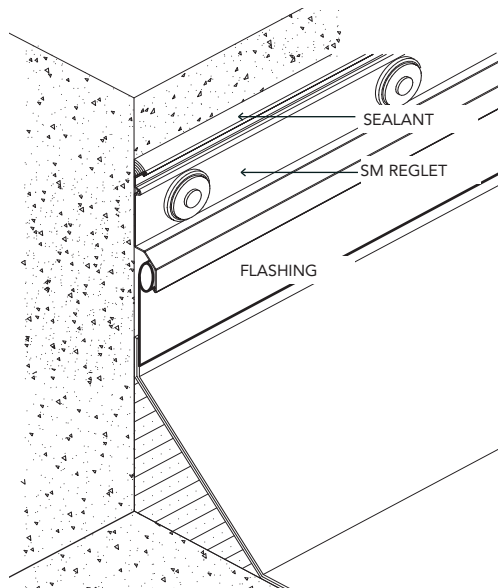
USAGE

SM reglet is designed for installation on any type of parapet wall, including tilt-up panels, precast panels, masonry and other smooth surfaces. Reglets are surface mounted with drive pins which are sealed with special washers (7/8" diameter stainless steel with neoprene facing).

Factory punched slots 16" o.c. allow for expansions and eliminate buckling away from the building. Special washers are supplied to aid installation.

System requires polyurethane, polysulfide or silicone sealant at time of installation in two places, at top and in recess, to seal against water penetration.

INSTALLATION DETAIL



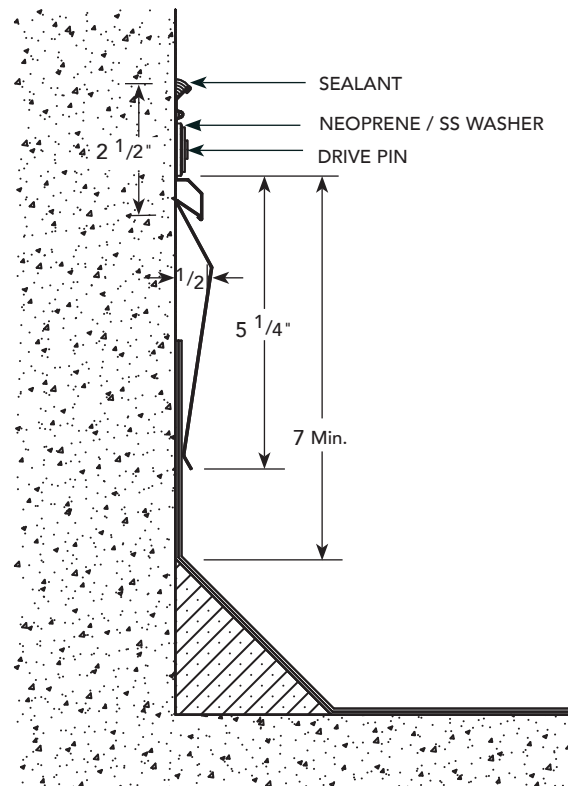
MATERIALS & FINISHES

MATERIAL & THICKNESS

- Galvanized steel – 24 ga.
- Copper – 16 oz.
- Aluminum – 0.025" & 0.040"
- Stainless steel, Type 304 – 0.020"

FINISH & COLOR

- Galvanized steel – Standard zinc finish
- Galvanized steel – Factory applied Kynar 500/Hylar 500 finish
- Copper – Standard uncoated finish
- Aluminum – Gray polyester coating
- Stainless steel, Type 304 – Standard uncoated finish



*Actual dimension between wall and the inside flange of reglet is 3/8".
 See separate sheet for product installation instructions. Drawings are not to scale.