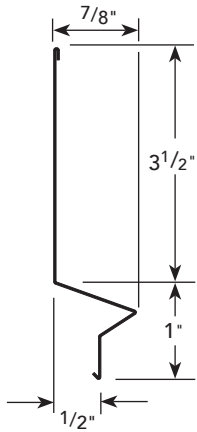


PRODUCT DETAIL



USAGE

STX reglet is specifically engineered for stucco over block conditions, and designed to accept Springlok flashing and other flexible flashing. A "V" projection allows stucco to be applied directly over the reglet. The efficient design of the STX reglet eliminates the need for a backing (nailer).

MATERIALS & FINISHES

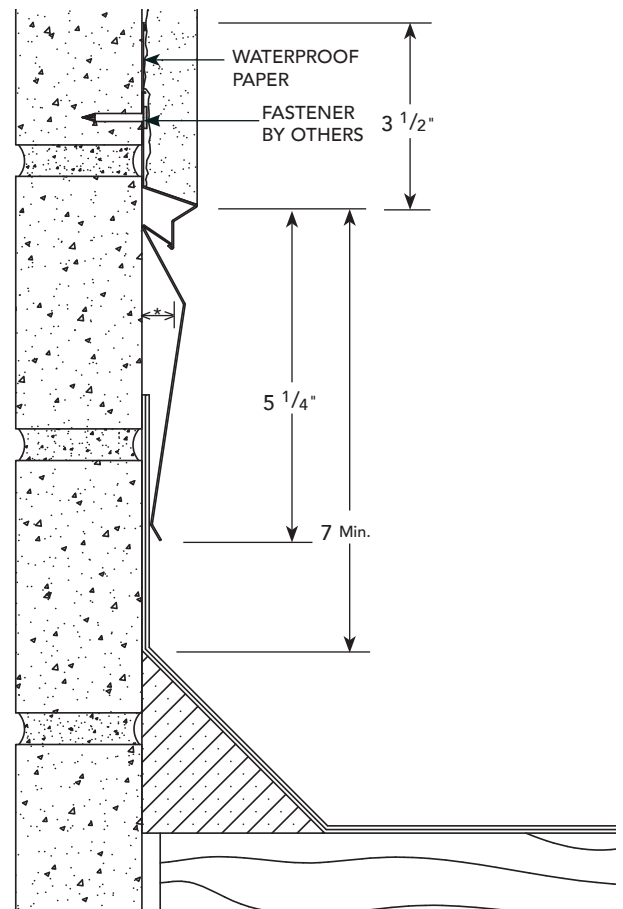
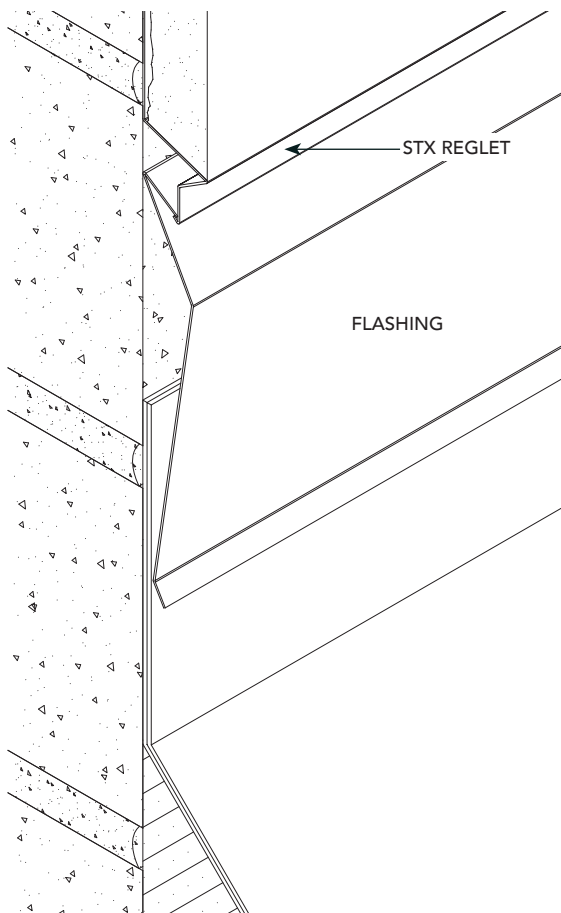
MATERIAL & THICKNESS

- Galvanized steel – 24 ga.
- Copper – 16 oz.
- Aluminum – 0.025" & 0.040"
- Stainless steel, Type 304 – 0.020"

FINISH & COLOR

- Galvanized steel – Standard zinc finish
- Galvanized steel – Factory applied Kynar 500/Hylar 500 finish
- Aluminum – Gray polyester coating
- Stainless steel, Type 304 – Standard uncoated finish

INSTALLATION DETAIL



*Actual dimension between wall and the inside flange of reglet is 3/8".
 See separate sheet for product installation instructions. Drawings are not to scale.