

J-Drain INSTALLATION GUIDELINES

Distributed by: BEST MATERIALS ®
 Ph: 800-474-7570, 602-272-8128 Fax: 602-272-8014
 www.BestMaterials.com Email: Sales@BestMaterials.com

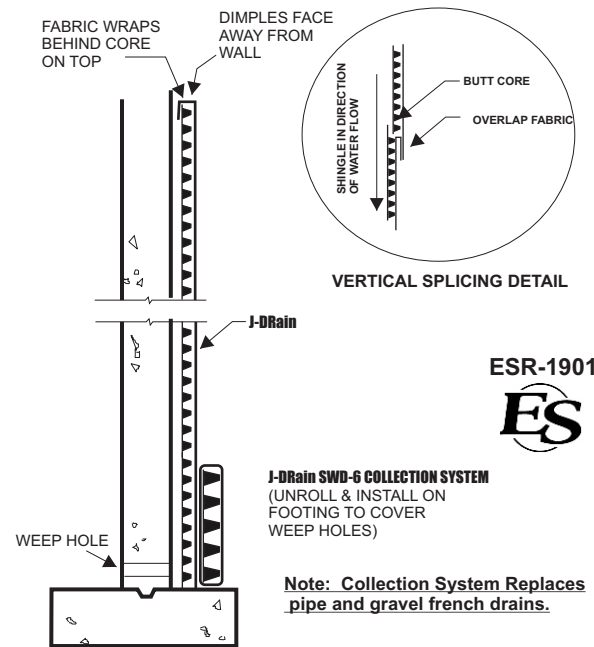
RETAINING WALL INSTALLATIONS (No Waterproofing Membrane)

Collection and Discharge Unroll and install **J-Drain SWD-6 OR 12** along footing and attach to wall covering weep holes for uniform collection and discharge to weep holes.

J-Drain Panels are installed above the **J-Drain SWD** Collection System as shown in detail. Panels are butted and the filter fabric is shingled as shown in the Splicing Detail. **ALL FACTORY EDGES AND CUT EDGES SHOULD BE COVERED WITH FILTER FABRIC EITHER BY OVERLAPPING EDGE OR COVERING WITH EXCESS FILTER FABRIC.**

Attachment Method: On concrete substrates, use mechanical fasteners, i.e., Nailing or powder actuated fasteners. On waterproofing substrates, use construction adhesives that are compatible with the waterproofing membrane. **DIMPLES & FILTER FABRIC ALWAYS FACES BACKFILL.**

Backfilling: Backfill as soon as possible not exceeding 5 - 7 days. Backfill in lifts and compact each lift. Backfill should extend at least 6" over top of panels.



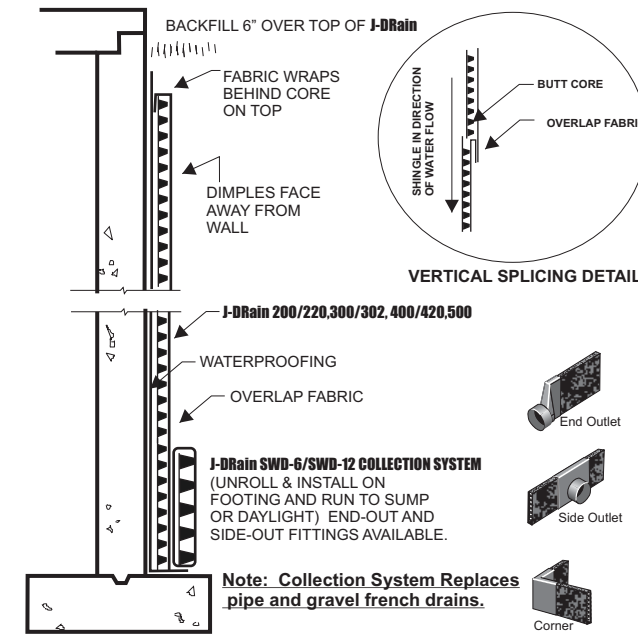
FOUNDATION WALL INSTALLATIONS (With Waterproofing Membrane)

Collection and Discharge Unroll and install **J-Drain SWD-6 OR 12** along footing and attach to wall covering weep holes for uniform collection and discharge to weep holes.

J-Drain Panels are installed above the **J-Drain SWD** Collection System as shown in detail. Panels are butted and the filter fabric is shingled as shown in the Splicing Detail. **ALL FACTORY EDGES AND CUT EDGES SHOULD BE COVERED WITH FILTER FABRIC EITHER BY OVERLAPPING EDGE OR COVERING WITH EXCESS FILTER FABRIC.**

Attachment Method On concrete substrates, use mechanical fasteners, i.e., Nailing or powder actuated fasteners. On waterproofing substrates, use constructions adhesives that are compatible with the waterproofing membrane. **DIMPLES & FILTER FABRIC ALWAYS FACES BACKFILL.**

Backfilling Backfill as soon as possible not exceeding 5 - 7 days. Backfill in lifts and compact each lift. Backfill should extend at least 6" over top of panels.

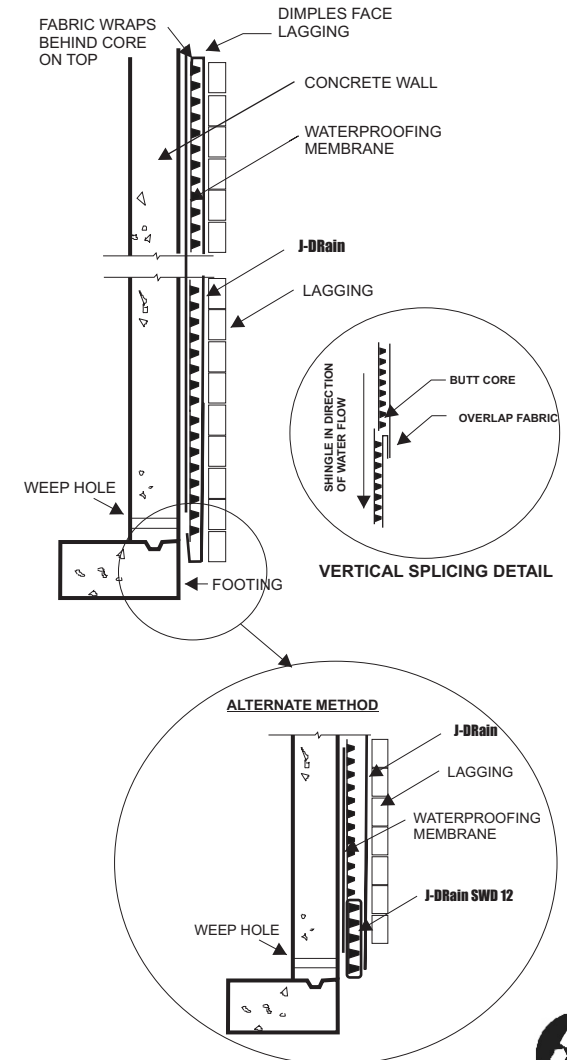


LAGGING WALL AND SOIL NAILING INSTALLATIONS (With Waterproofing Membrane)

Collection and Discharge Unroll and install **J-Drain SWD-6 OR 12** along footing and attach to wall covering weep holes for uniform collection and discharge to weep holes.

J-Drain Panels are installed above the **J-Drain SWD** Collection System as shown in detail. Panels are butted and the filter fabric is shingled as shown in the Splicing Detail. **ALL FACTORY EDGES AND CUT EDGES SHOULD BE COVERED WITH FILTER FABRIC EITHER BY OVERLAPPING EDGE OR COVERING WITH EXCESS FILTER FABRIC.**

Attachment Method On wood substrate, attach by nailing to lagging wall. On earth substrates, use anchor pins with washers. **DIMPLES & FILTER FABRIC ALWAYS FACES SOIL.**



HORIZONTAL INSTALLATIONS:

Unrolling Panels Starting along edge of horizontal area, unroll panel while folding fabric over edge adjacent to starting edge. On sloped surfaces, unroll in direction of slope. **Filter fabric faces top side.** Adjacent panels should be unrolled and splices should be performed as shown in **Splicing Detail**.

EDGES All factory edges and/or cut edges must be covered with filter fabric to prevent intrusion of cover material (soil, sand, concrete, etc.)

EXPOSURE Do not leave exposed to intensive sunlight for extended periods of time (5-7 days)

BUY NOW:
<http://www.bestmaterials.com/detail.aspx?ID=21905>

