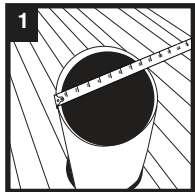


Distributed by: BEST MATERIALS LLC  
Ph: 800-474-7570, 602-272-8128 Fax: 602-272-8014  
www.BestMaterials.com Email: Sales@BestMaterials.com

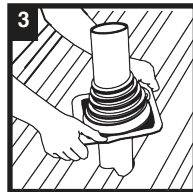
### STANDARD INSTALLATION



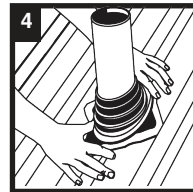
1 Measure for correct pipe size



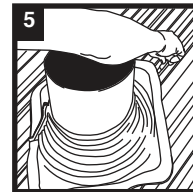
2 Choose pipe opening and trim.



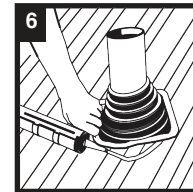
3 Slide flashing over Pipe using water.



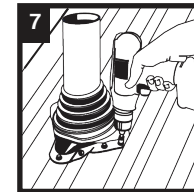
4 Form flashing to roof profile



5 Trace Flashing

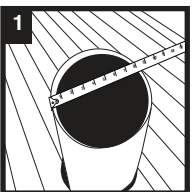


6 Apply Sealant

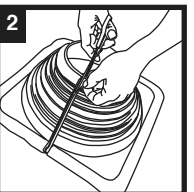


7 Fasten flashing to complete

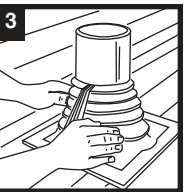
### RETROFIT INSTALLATION



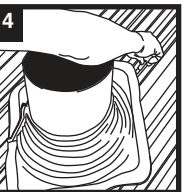
1 Measure for correct pipe size



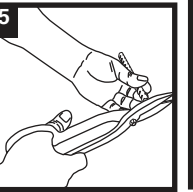
2 Cut flashing to fit pipe size.



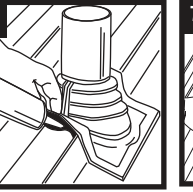
3 Choose pipe opening and trim.



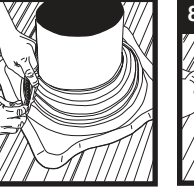
4 Trace Flashing



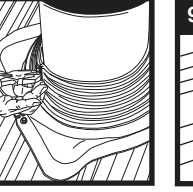
5 Cut gripper to fit.



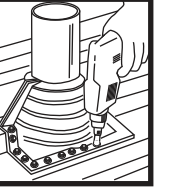
6 Apply Sealant



7 Slide gripper on to flashing.



8 Crimp gripper to flashing with pliers.



9 Fasten flashing to complete