



RES-LEAD MASTER FLASH®

POWDER COATED SAFE LEAD

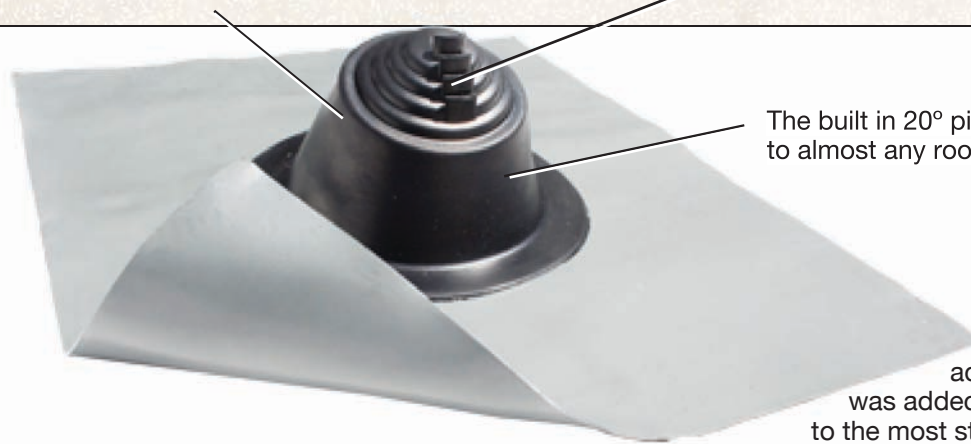
TWO COMPOUNDS / 4 SIZES

Self extinguishing feature enables use with type "B" vents

Weather Protection

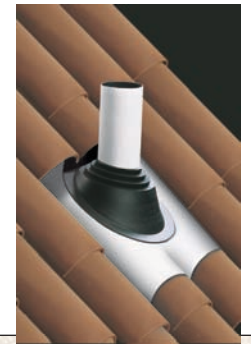
Made of EPDM or Silicone, these flashings are compounded specifically for maximum resistance to weathering due to ozone and ultraviolet light.

The pull tab design and easy smooth tear grooving is intended to eliminate razor knives and allow for a circular hole



The built in 20° pitch allows adaptability to almost any roof pitch including 45°

A "C20" ASTM additional requirement was added to assure conformance to the most stringent ozone/weathering specifications available. This addition allows the rubber a 20 year life.



"ENVIRONMENTALLY SAFE"

Powder coated Safe-Lead metal base.

EPDM rubber is available in black and grey or silicone *Custom colors are available upon request, an additional cost may apply.

	Pipe Size	Compound	Part No.		Flashing Details	
MINI	1/4" - 3" (6.35 - 76.2 mm)	Black EPDM	RL051BA		A-Top opening diameter	Closed
		Grey EPDM	RL051GA		B-Pull to suit pipe size	1/4" - 3" (6.35 - 76.2 mm)
		Silicone	RL052RA		C-Base dimensions	16" X 19-1/4" (410 X 490 mm)
#1	3" - 8" (76.2 - 203.2 mm)	Black EPDM	RL101BA		A-Top opening diameter	2-1/2" (63.5 mm)
		Grey EPDM	RL101GA		B-Pull to suit pipe size	3" - 8" (76.2 - 203.2 mm)
		Silicone	RL102RA		C-Base dimensions	20" X 24" (508 X 609.5 mm)
#2	8" - 11" (203.1 - 279.4 mm)	Black EPDM	RL201BA		A-Top opening diameter	5-5/8"(142.875 mm)
		Grey EPDM	RL201GA		B-Pull to suit pipe size	8" - 11"(203.1 - 279.4 mm)
		Silicone	RL201RA		C-Base dimensions	26" X 30" (660.3 X 762 mm)
#3	11" - 18" (279.4 - 457 mm)	Black EPDM	RL301BA		A-Top opening diameter	8-3/4" (222.2 mm)
		Grey EPDM	RL301GA		B-Pull to suit pipe size	11" - 18" (279.4 - 457 mm)
		Silicone	RL302RA		C-Base dimensions	35" - 35" (889 X 889 mm)

RES-LEAD MASTER FLASH® RUBBER COLORS...

white, grey, black, light and dark green, light and dark blue, terra cotta (red clay appearance) and bright red. Base coloring options are available an additional cost may apply.

