



## StreetBond® Care, Maintenance and Repair Guide



# Care

StreetBond® coatings protect asphalt from aging and weathering, providing a sustainable, renewable surface. Caring for the project will not only preserve the look of the project, but also lengthen its overall lifespan.

## KEEP THE SURFACE CLEAN

**Dirt, Sand and Gravel:** If dirt, sand or gravel are present at the interface between vehicle tires and the StreetBond® coated surface, a grinding action will occur. This will result in premature wear of the coating and can chip the impressed pattern in the asphalt.

**Oil Stains:** Mild oil leaks do not damage the StreetBond® coated surface other than being unsightly. To remove oil stains, use a mild degreaser or detergent such as United Cleaning Concentrate (UCC) or Simple Green-All Purpose Cleaner.

**Leaves:** In certain climates, some types of leaves can stain the StreetBond® coated surface. Light colored leaves tend to show stains more readily than darker ones. In areas where leaf staining may be a problem, regular leaf cleaning is recommended.

**Chewing Gum:** Removal of chewing gum from asphalt surfaces can be difficult. Use ice to freeze the gum, and then chip off the gum with a small paint scraper. Use care not to damage the StreetBond® coating.



**NOTE:** Pressure washing StreetBond® coated surfaces is acceptable, but exercise caution when using extremely high pressure commercial pressure washers to clean StreetBond® coated surfaces. Extremely powerful water jets can cause the asphalt to delaminate below the StreetBond® coating. GAF recommends 2000psi or less when directly cleaning the surface.

Alternatively, use road sweeper vehicles that are equipped with nylon rotating brushes and water sprayer/jet nozzles to remove dirt from the surface. Do not use rotating brushes with steel bristles as that may cause damage and premature wearing of the coating.

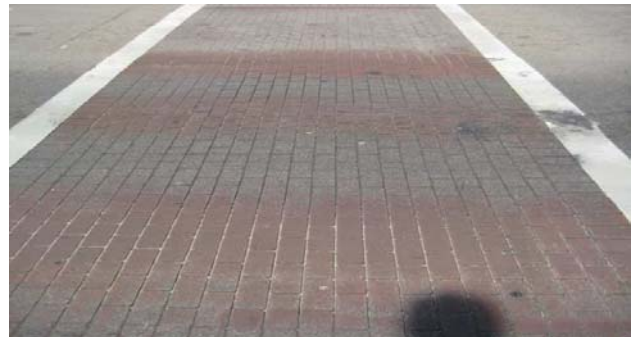
# Maintenance

## RECOATING

StreetBond® provides a sustainable, renewable surface. Generally, the only maintenance required is recoating the surface. However, if the original stamped impression have worn away, re-stamping will also be required, before recoating.

StreetBond® projects can be recoated at any time to make an old project look brand new. When doing maintenance, apply more of the coating to the areas that have experienced more focused wear. Targeting the areas that receive more traffic by applying more coating will allow for longer wear and more cost effective maintenance cycles.

Recoating a worn area requires the same climate conditions and installation methods as a new application; please consult the “Recommended Application Procedure Guide” for your specific StreetBond® product.



***Please contact your local Applicator to receive a quote for recoating your existing project. If you require assistance locating an Applicator, call GAF Technical Services at [technicalquestions@gaf.com](mailto:technicalquestions@gaf.com) or call 800-766-3411.***

# Repair

---

Although StreetBond® coatings are highly durable and long lasting; they are subject to the quality of the asphalt on which they are applied. Occasionally, asphalt repair may be required. The following key factors should always be considered when doing an asphalt repair to optimize the final look.

## 1. ASPHALT REMOVAL

For repairs that require asphalt removal, always use a saw to make cuts within the grout lines if possible, as cuts outside of the grout lines may be visible when the project is finished.

## 2. DIGGING BELOW ASPHALT

If repairs will involve digging below the removed asphalt, always replace any base material that was removed and ensure proper compaction to avoid uneven settlement of new asphalt.

## 3. ASPHALT REPLACEMENT

When replacing removed asphalt, ensure the new asphalt is properly compacted using a roller or plate compactor so it sits flush with the existing asphalt.



**Please contact your local Applicator to receive a quote on repairing your existing project. If you require assistance locating an Applicator, contact GAF Technical Services at [technicalquestions@gaf.com](mailto:technicalquestions@gaf.com) or call 800-766-3411.**