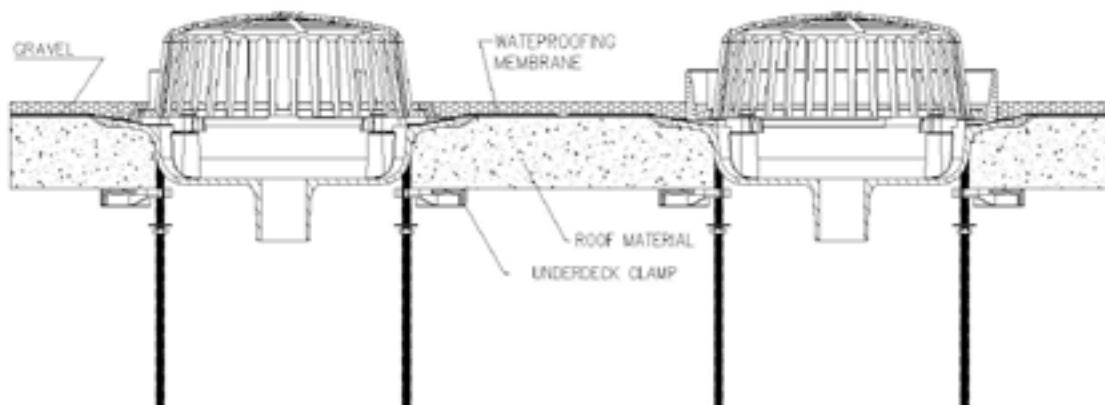


DISTRIBUTED BY

Best MATERIALS.com[®]



**RD4000 ROOF DRAIN
INSTALLATION INSTRUCTIONS**



INSTALLATION INSTRUCTIONS FOR RD4000

Sun Roof Drains shall be installed in areas where waterproofing material is utilized. It is recommended to use a sump receiver for roof drain installations. Place the sump receiver so that it is flush with the supporting edges. Attach with self-tapping screws (provided by others). Install roof drain sump onto the sump receiver so that the sump rests evenly within the groove of the sump receiver. Water proof membrane to be placed over sump receiver and sump. Bolt clamping collar to sump receiver. Tighten sufficiently to create watertight seal. Place dome in clamping collar and twist to lock dome into retaining clips on clamping collar. The underdeck clamp is recommended for installations. From the underside, thread the three studs into the three taps and tighten. Install the underdeck clamp onto the three rods and affix in place with washer and nut on each stud. Use spacers if required, (provided by others) placed between clamping collar and the support assembly and tighten nuts to secure roof drain sump to sump receiver. Make connection to roof drain outlet with piping material. Push On connection is not recommended for roof drains. The O-ring or gasketed joints shall comply with ASTM C564,C1440,or CSA B602.

#XSRD4000 SUN Drainage Roof Drain Instruction Sheet Rev. A.11/2016
12600 Cardinal Meadow • Sugar Land, TX 77478
www.sundrainage.com

Note - Dimensional Data (inches and mm) are Subject to Manufacturing Tolerances and Change without Notice.

sales@bestmaterials.com | <http://www.bestmaterials.com> | 1-800-474-7570