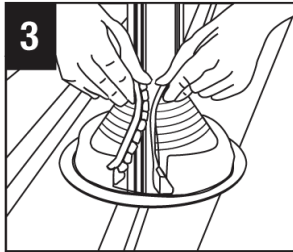
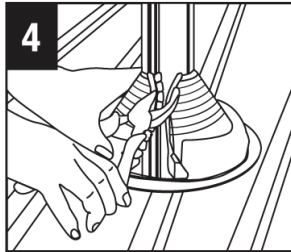


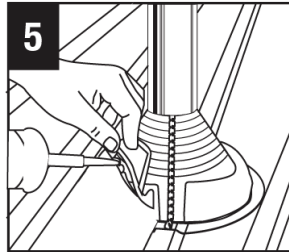
2 Using tin snips, cut the cone to fit pipe, starting opposite the mechanical locking joint.



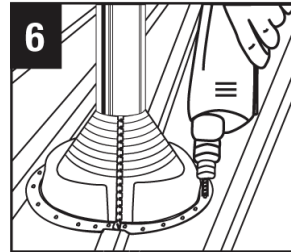
3 Wrap Retrofit around pipe, join the interlocking teeth starting from the top and proceeding down.



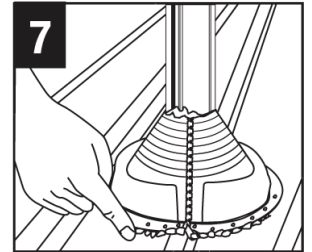
4 Squeeze jointer tightly with pliers to crimp, start at the top and work down to the base.



5 Add a bead of metal roofing sealant under base/foot, and then around top edge.



6 Fasten Retrofit to roof using self-drilling screws, leave no gaps between base and the roof contours.



7 Apply additional sealant to mechanical locking jointer seam and to all areas that could be a potential leak risk.