



Alumi-Flash Systems

Technical Product Information

New construction flashings for all roof types

Standard
Alumi-Flash



Extra Wide
Alumi-Flash



Extra Tall
Alumi-Flash



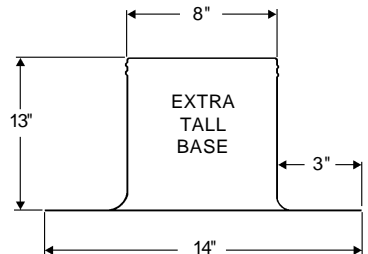
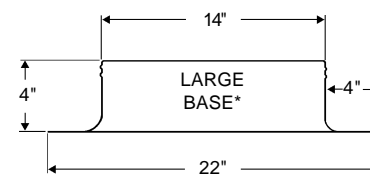
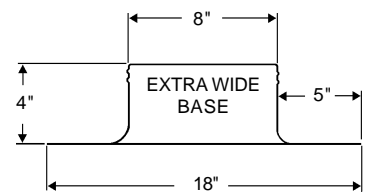
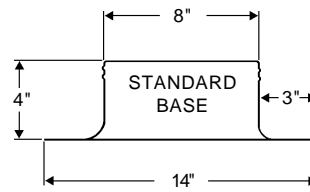
Large
Alumi-Flash

Prefabricated Roof Accessories for
All Roof Systems



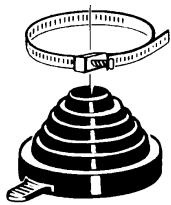
New construction flashings for all roof types

The Portals Plus Alumi-Flash is compatible with all types of roof systems and makes pitch pans obsolete. Due to the flexibility of the EPDM rubber caps, roof leaks are eliminated because penetrations are allowed to expand, contract, and vibrate independently of the waterproofing. There are five (5) caps available which accommodate a variety of pipes, tubes, and angle irons from .375" through 12". The caps are molded EPDM (Ethylene Propylene Diene Monomer) rubber which is compounded to resist degradation due to oxidation or exposure to ozone and ultraviolet rays, while having a serviceable temperature range of -60F to +270F. The caps are mechanically sealed to the Alumi-Flash base with a double "Weather-Tite Pressure Seal", which consists of two (2) beads formed into the collar that mate with the double grooves on the inside of the caps. The base must be roofed in, using good roofing practices. Together, the cap and base provide a permanent, watertight and maintenance free means for penetrating roofs that is simple and easy to install.

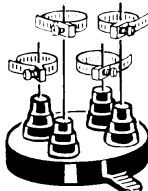


*For use with C-182

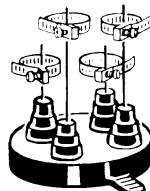
SELECT A CAP FOR EACH BASE REQUIRED



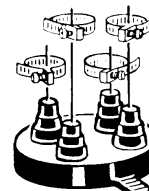
C-126
1 - 2" TO 6" PIPE



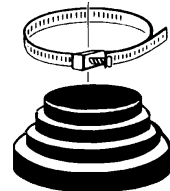
C-412
4 - 1" TO 2" PIPES



C-481
4 - .375" TO 1" PIPES



C-212
2 - .375" TO 1" PIPES
2 - 1" TO 2" PIPES



C-182
1 - 8" TO 12" PIPE

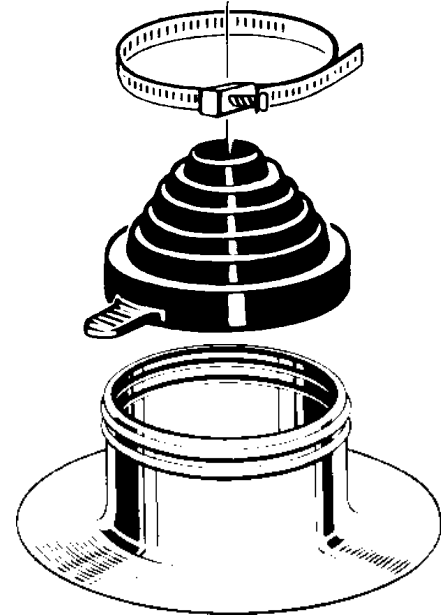
Distributed by: **BEST MATERIALS LLC**
 Ph: 1-800-474-7570, 1-602-272-8128 Fax: 1-602-272-8014
 Email: sales@bestmaterials.com www.bestmaterials.com



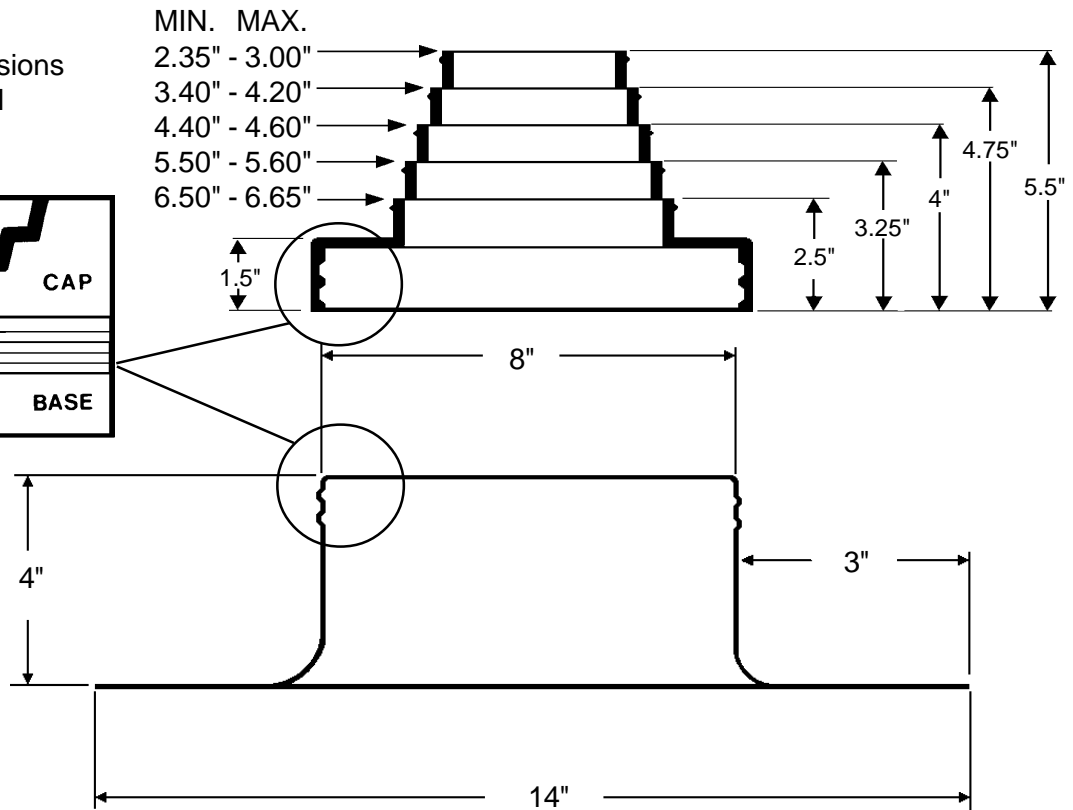
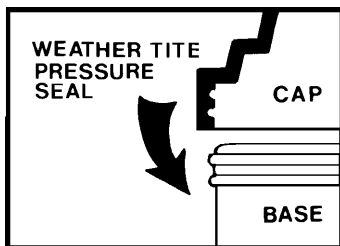
Alumi-Flash Standard with C-126 Cap

SPECIFICATION

Furnish and install the Portals Plus Standard Alumi-Flash as manufactured by Portals Plus, Inc., Bensenville, IL, at all points where one penetration 2" - 6" in diameter penetrates the roof. The Standard Alumi-Flash shall include a .060" spun aluminum base unit with a height of 4" and a base diameter of 14". The 8" collared opening shall have two beaded sealing rings roll formed into the top edge. An EPDM (Ethylene Propylene Diene Monomer) compression molded cap model C-126 shall be utilized. The Cap shall include Portals Plus' stainless steel Snaplock Clamp. Attachment and installation of the Standard Alumi-Flash shall be done in accordance with Portals Plus' instructions and the roofing membrane manufacturer's recommendations.



NOTE: All dimensions are I.D. of conical shaped nipples



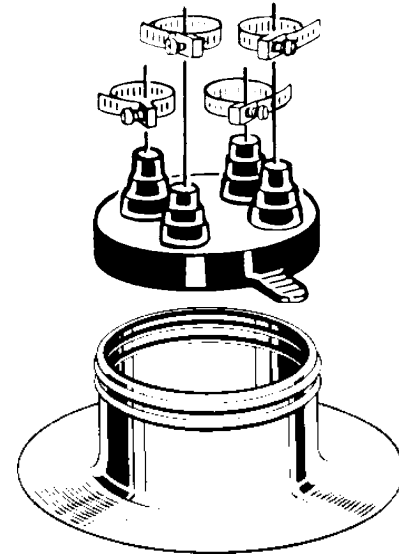
Distributed by: [BEST MATERIALS LLC](#)
 Ph: 1-800-474-7570, 1-602-272-8128 Fax: 1-602-272-8014
 Email: sales@bestmaterials.com www.bestmaterials.com



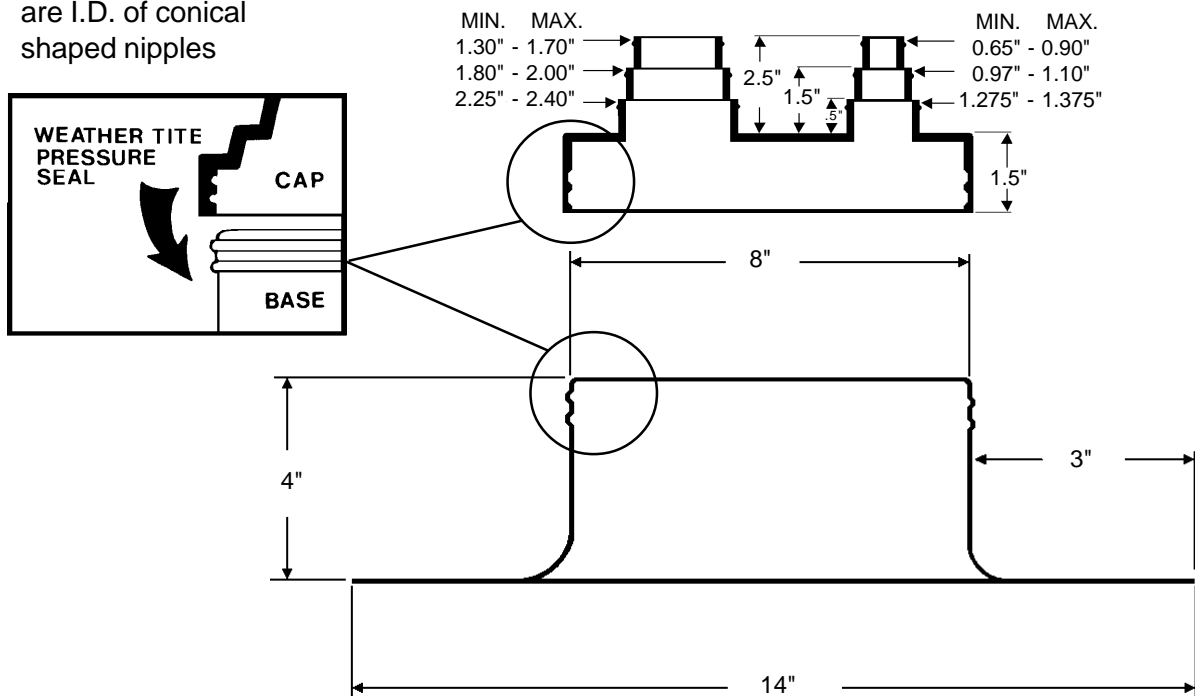
Alumi-Flash Standard with C-212 Cap

SPECIFICATION

Furnish and install the Portals Plus Standard Alumi-Flash as manufactured by Portals Plus, Inc., Bensenville, IL, at all points where up to two pipes .375" - 1" and up to two pipes 1" - 2" in diameter are penetrating the roof. The Standard Alumi-Flash shall include a .060" spun aluminum base unit with a height of 4" and a base diameter of 14". The 8" collared opening shall have two beaded sealing rings roll formed into the top edge. An EPDM (Ethylene Propylene Diene Monomer) compression molded cap model C-212 shall be utilized. All Caps shall include Portals Plus' stainless steel Snaplock Clamps. Attachment and installation of the Standard Alumi-Flash shall be done in accordance with Portals Plus' instructions and the roofing membrane manufacturer's recommendations.



NOTE: All dimensions are I.D. of conical shaped nipples



Distributed by: **BEST MATERIALS LLC**
 Ph: 1-800-474-7570, 1-602-272-8128 Fax: 1-602-272-8014
 Email: sales@bestmaterials.com www.bestmaterials.com