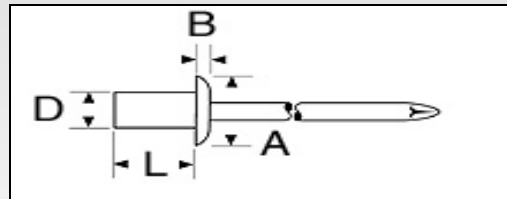


Closed End

Stainless Rivet with *Stainless* Mandrel
 (304) (420)



Part #	(D) Rivet Dia	(L) Rivet Length	(A) Flg Dia	(B) Head Height	Grip Range	Shear Strength	Tensile Strength	Drill Bit Size	Box Qty	Box Weight
GR-STSSCE41	1/8	.297	.250	.050	1/32 - 1/16	441 lbs	551 lbs	#30	10,000	
SSBCE42	1/8	.360	.250	.050	1/16 - 1/8	441 lbs	551 lbs	#30	10,000	
GR-STSSCE43	1/8	.422	.250	.050	1/8 - 3/16	441 lbs	551 lbs	#30	10,000	
SSBCE44	1/8	.485	.250	.050	3/16 - 1/4	441 lbs	551 lbs	#30	10,000	
GR-STSSCE45	1/8	.547	.250	.050	1/4 - 5/16	441 lbs	551 lbs	#30	10,000	
SSBCE46	1/8	.610	.250	.050	5/16 - 3/8	441 lbs	551 lbs	#30	10,000	
GR-STSSCE48	1/8	.735	.250	.050	3/8 - 1/2	441 lbs	551 lbs	#30	10,000	
SSBCE52	5/32	.375	.312	.065	1/32 - 1/8	389 lbs	418 lbs	#20	8,000	
GR-STSSCE53	5/32	.437	.312	.065	1/8 - 3/16	389 lbs	418 lbs	#20	8,000	
SSBCE54	5/32	.500	.312	.065	3/16 - 1/4	389 lbs	418 lbs	#20	8,000	
GR-STSSCE55	5/32	.562	.312	.065	1/4 - 5/16	389 lbs	418 lbs	#20	8,000	
SSBCE56	5/32	.625	.312	.065	5/16 - 3/8	389 lbs	418 lbs	#20	6,000	
GR-STSSCE58	5/32	.750	.312	.065	3/8 - 1/2	389 lbs	418 lbs	#20	6,000	
SSBCE62	3/16	.406	.375	.080	1/32 - 1/8	991 lbs	1210 lbs	#11	5,000	35 lbs
GR-STSSCE63	3/16	.468	.375	.080	1/8 - 3/16	991 lbs	1210 lbs	#11	5,000	
SSBCE64	3/16	.531	.375	.080	3/16 - 1/4	991 lbs	1210 lbs	#11	5,000	40 lbs
GR-STSSCE66	3/16	.656	.375	.080	1/4 - 3/8	991 lbs	1210 lbs	#11	5,000	38 lbs
SSBCE68	3/16	.781	.375	.080	3/8 - 1/2	991 lbs	1210 lbs	#11	4,000	
GR-STSSCE610	3/16	.906	.375	.080	1/2 - 5/8	991 lbs	1210 lbs	#11	4,000	
SSBCE612	3/16	1.026	.375	.080	5/8 - 3/4	991 lbs	1210 lbs	#11	4,000	

Conforms to IFI-114 Standards
Compliant to RoHS Standards
 ISO 9001:2000