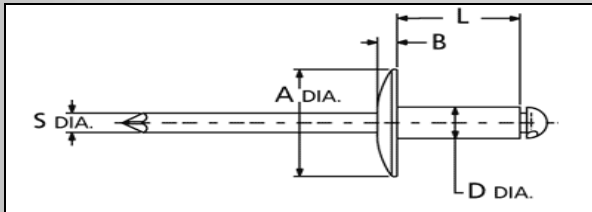


Open End, *Large Flange*

Steel Rivet with *Steel* Mandrel



Part #	(D) Rivet Dia	(L) Rivet Length	(A) Flg Dia	(B) Head Height	Grip Range	Shear Strength	Tensile Strength	Drill Bit Size	Box Qty	Box Weight
GR-SS42LF	1/8	.275	.375	.065	1/32 - 1/8	260 lbs	310 lbs	#30	10,000	38 lbs
GR-SS43LF	1/8	.337	.375	.065	1/8 - 3/16	260 lbs	310 lbs	#30	10,000	
GR-SS44LF	1/8	.400	.375	.065	3/16 - 1/4	260 lbs	310 lbs	#30	10,000	41lbs
GR-SS46LF	1/8	.525	.375	.065	1/4 - 3/8	260 lbs	310 lbs	#30	10,000	
GR-SS48LF	1/8	.650	.375	.065	3/8 - 1/2	260 lbs	310 lbs	#30	10,000	
GR-SS410LF	1/8	.775	.375	.065	1/2 - 5/8	260 lbs	310 lbs	#30	8,000	
GR-SS412LF	1/8	.901	.375	.065	5/8 - 3/4	260 lbs	310 lbs	#30	6,000	
GR-SS53LF	5/32	.362	.468	.070	1/32 - 3/16	370 lbs	470 lbs	#20	8,000	
GR-SS54LF	5/32	.425	.468	.070	3/16 - 1/4	370 lbs	470 lbs	#20	8,000	
GR-SS56LF	5/32	.550	.468	.070	1/4 - 3/8	370 lbs	470 lbs	#20	6,000	
GR-SS58LF	5/32	.675	.468	.070	3/8 - 1/2	370 lbs	470 lbs	#20	6,000	
GR-SS510LF	5/32	.800	.468	.070	1/2 - 5/8	370 lbs	470 lbs	#20	6,000	
GR-SS512LF	5/32	.925	.468	.070	5/8 - 3/4	370 lbs	470 lbs	#20	5,000	
GR-SS63LF	3/16	.387	.615	.090	1/32 - 3/16	540 lbs	680 lbs	#11	5,000	
GR-SS64LF	3/16	.450	.615	.090	3/16 - 1/4	540 lbs	680 lbs	#11	5,000	
GR-SS66LF	3/16	.575	.615	.090	1/4 - 3/8	540 lbs	680 lbs	#11	5,000	41 lbs
GR-SS68LF	3/16	.700	.615	.090	3/8 - 1/2	540 lbs	680 lbs	#11	4,000	44 lbs
GR-SS610LF	3/16	.825	.615	.090	1/2 - 5/8	540 lbs	680 lbs	#11	4,000	
GR-SS612LF	3/16	.950	.615	.090	5/8 - 3/4	540 lbs	680 lbs	#11	4,000	
GR-SS614LF	3/16	1.075	.615	.090	3/4 - 7/8	540 lbs	680 lbs	#11	4,000	
GR-SS616LF	3/16	1.200	.615	.090	7/8 - 1	540 lbs	680 lbs	#11	3,000	

Conform to IFI-114 Grade 30 Standards
 Compliant to RoHS Standards
 ISO 9001:2000