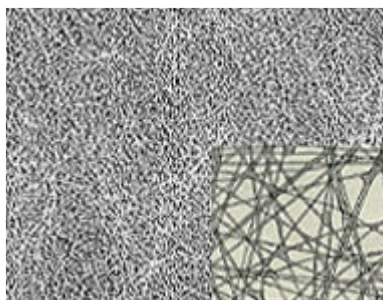


## Hanes Filtration Product List



56 x Magnification

Distributed by: BEST MATERIALS LLC, Phoenix AZ  
 Ph: 800-474-7570, 602-272-8128 Fx: 602-272-8014  
[www.BestMaterials.com](http://www.BestMaterials.com) Email: [Sales@BestMaterials.com](mailto:Sales@BestMaterials.com)

### Pureflo Features

- Excellent in straight oil applications
- Excellent strength both in cross direction and machine direction
- Wide weight ranges
- Good for larger particle removal
- Can cross for expensive nylon media's

High strength media that works well in straight oil or filtration applications where restricted flow is a problem. Pureflo is a flatbonded polyester that provides good cake building characteristics and can be used on pressure, vacuum and gravity filters.

Pureflo allows for good filtration in applications where blinding occurs regularly. If your application has a high tramp oil concentration Pureflo can help in providing longer cycles due to the fact, polyester does not bind with oils. This media also does a great job where larger particles are present such as creep feed grinding or chip applications .

**Pureflo is recommended for :**  
**Pressure, Vacuum and to a lesser extent Gravity Filter**

### Typical Applications

1. Grinding of all types. Centerless, Thru Feed, Cylindrical, Roll Grinding, Surface, Belt, Double Disc, Honing.
2. Tube Mills and Saws
3. Tower Water
4. Plating
5. Parts Washers
6. Paint Booths

### Media Specifications

Product Identification	Fiber	Weight (oz/yd)	Thickness (mils)	Air Perm (cfm/ft)	Tensile (md x cd)	Micron Rating

continued...

<b>Pureflo 50 HEM</b>	<b>Polyester</b>	<b>.50</b>	<b>5</b>	<b>957</b>	<b>9 x 5</b>	<b>300</b>
<b>Pureflo 75 HEM</b>	<b>Polyester</b>	<b>.75</b>	<b>7.4</b>	<b>800</b>	<b>18 x 17</b>	<b>200</b>
<b>Pureflo 100 HEM</b>	<b>Polyester</b>	<b>1.00</b>	<b>8.8</b>	<b>600</b>	<b>20 x 11</b>	<b>150</b>
<b>Pureflo 125 HEM</b>	<b>Polyester</b>	<b>1.25</b>	<b>10</b>	<b>450</b>	<b>28 x 19</b>	<b>70</b>
<b>Pureflo 150 HEM</b>	<b>Polyester</b>	<b>1.50</b>	<b>11</b>	<b>300</b>	<b>34 x 20</b>	<b>50</b>
<b>Pureflo 200 HEM</b>	<b>Polyester</b>	<b>2.00</b>	<b>13</b>	<b>395</b>	<b>42 x 23</b>	<b>25</b>
<b>Pureflo 300 HEM</b>	<b>Polyester</b>	<b>3.00</b>	<b>15</b>	<b>170</b>	<b>43 x 28</b>	<b>10</b>
<b>Pureflo 400 HEM</b>	<b>Polyester</b>	<b>4.00</b>	<b>17</b>	<b>163</b>	<b>43 x 47</b>	<b>5</b>